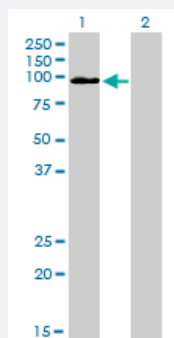


# MCC monoclonal antibody (M01), clone 1A7

Catalog # H00004163-M01

Size 100 ug

## Applications

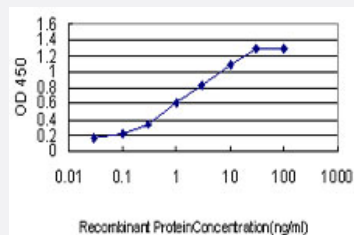


### Western Blot (Transfected lysate)

Western Blot analysis of MCC expression in transfected 293T cell line by MCC monoclonal antibody (M01), clone 1A7.

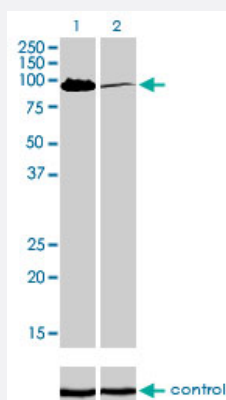
Lane 1: MCC transfected lysate (93.1 kDa).

Lane 2: Non-transfected lysate.



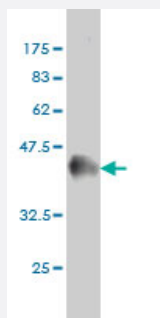
### Sandwich ELISA (Recombinant protein)

Detection limit for recombinant GST tagged MCC is approximately 0.03 ng/ml as a capture antibody.



### RNAi Knockdown (Antibody validated)

Western blot analysis of MCC over-expressed 293 cell line, cotransfected with MCC Validated Chimera RNAi (Cat # H00004163-R01V) (Lane 2) or non-transfected control (Lane 1). Blot probed with MCC monoclonal antibody (M01), clone 1A7 (Cat # H00004163-M01). GAPDH (36.1 kDa) used as specificity and loading control.



Western Blot detection against Immunogen (36.63 KDa) .

## Specification

<b>Product Description</b>	Mouse monoclonal antibody raised against a partial recombinant MCC.
<b>Immunogen</b>	MCC (AAH09279, 31 a.a. ~ 130 a.a) partial recombinant protein with GST tag. MW of the GST tag alone is 26 KDa.
<b>Sequence</b>	DIVELNKRLQQTERERDLLEKKLAKAQCEQSHLMREHEDVQERTTLRYEERITELHSVIAELNKKID RLQGTIREEDEYSELRSLSQSQHEVNEDSRS
<b>Host</b>	Mouse
<b>Reactivity</b>	Human
<b>Isotype</b>	IgG1 Kappa
<b>Quality Control Testing</b>	Antibody Reactive Against Recombinant Protein. Western Blot detection against Immunogen (36.63 KDa) .
<b>Storage Buffer</b>	In 1x PBS, pH 7.4
<b>Storage Instruction</b>	Store at -20°C or lower. Aliquot to avoid repeated freezing and thawing.

## Applications

- Western Blot (Transfected lysate)

Western Blot analysis of MCC expression in transfected 293T cell line by MCC monoclonal antibody (M01), clone 1A7.

Lane 1: MCC transfected lysate(93.1 KDa).

Lane 2: Non-transfected lysate.

[Protocol Download](#)

- Western Blot (Recombinant protein)

[Protocol Download](#)

- Sandwich ELISA (Recombinant protein)

Detection limit for recombinant GST tagged MCC is approximately 0.03ng/ml as a capture antibody.

[Protocol Download](#)

- ELISA

- RNAi Knockdown (Antibody validated)

Western blot analysis of MCC over-expressed 293 cell line, cotransfected with MCC Validated Chimera RNAi ( Cat # H00004163-R01V ) (Lane 2) or non-transfected control (Lane 1). Blot probed with MCC monoclonal antibody (M01), clone 1A7 (Cat # H00004163-M01 ). GAPDH ( 36.1 kDa ) used as specificity and loading control.

[Protocol Download](#)

## Gene Info — MCC

Entrez GeneID [4163](#)

GeneBank Accession# [BC009279](#)

Protein Accession# [AAH09279](#)

Gene Name MCC

Gene Alias DKFZp762O1615, FLJ38893, FLJ46755, MCC1

Gene Description mutated in colorectal cancers

Omim ID [159350](#)

Gene Ontology [Hyperlink](#)

**Gene Summary** This gene is a candidate colorectal tumor suppressor gene that is thought to negatively regulate cell cycle progression. The orthologous gene in the mouse expresses a phosphoprotein associated with the plasma membrane and membrane organelles, and overexpression of the mouse protein inhibits entry into S phase. Multiple transcript variants encoding different isoforms have been found for this gene. [provided by RefSeq]

Other Designations -

## Disease

- [Cerebral Hemorrhage](#)
- [Dermatitis](#)

- [Genetic Predisposition to Disease](#)
- [Hypertension](#)
- [Intracranial Hemorrhages](#)
- [Stroke](#)
- [Subarachnoid Hemorrhage](#)
- [Tobacco Use Disorder](#)