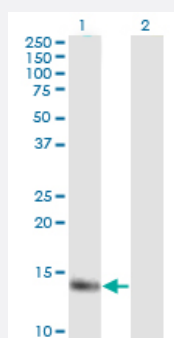


MB monoclonal antibody (M13), clone 4F8

Catalog # H00004151-M13

Size 100 ug

Applications

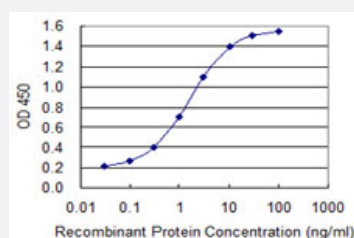


Western Blot (Transfected lysate)

Western Blot analysis of MB expression in transfected 293T cell line by MB monoclonal antibody (M13), clone 4F8.

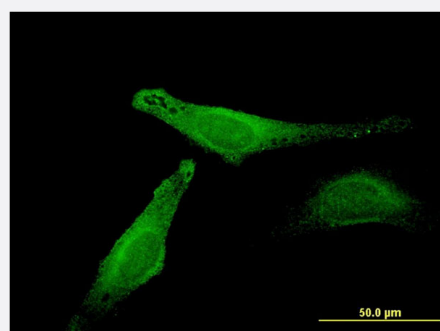
Lane 1: MB transfected lysate(17.2 KDa).

Lane 2: Non-transfected lysate.



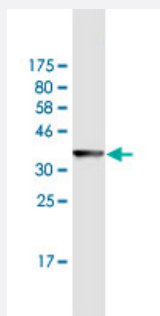
Sandwich ELISA (Recombinant protein)

Detection limit for recombinant GST tagged MB is 0.03 ng/ml as a capture antibody.



Immunofluorescence

Immunofluorescence of monoclonal antibody to MB on HeLa cell . [antibody concentration 10 ug/ml]



Western Blot detection against Immunogen (36.52 KDa) .

Specification

Product Description	Mouse monoclonal antibody raised against a partial recombinant MB.
Immunogen	MB (NP_005359.1, 2 a.a. ~ 100 a.a) partial recombinant protein with GST tag. MW of the GST tag alone is 26 KDa.
Sequence	GLSDGEWQLVLNVWGKVEADIPGHGQEVLRIRLFKGHPEKFDKFKHLKSEDEMKASEDLKKH GATVLTALGGILKKKGHHEAEIKPLAQSHATKHKI
Host	Mouse
Reactivity	Human
Isotype	IgG1 Kappa
Quality Control Testing	Antibody Reactive Against Recombinant Protein. Western Blot detection against Immunogen (36.52 KDa) .
Storage Buffer	In 1x PBS, pH 7.4
Storage Instruction	Store at -20°C or lower. Aliquot to avoid repeated freezing and thawing.

Applications

- Western Blot (Transfected lysate)

Western Blot analysis of MB expression in transfected 293T cell line by MB monoclonal antibody (M13), clone 4F8.

Lane 1: MB transfected lysate(17.2 KDa).

Lane 2: Non-transfected lysate.

[Protocol Download](#)

- Western Blot (Recombinant protein)

[Protocol Download](#)

- Sandwich ELISA (Recombinant protein)

Detection limit for recombinant GST tagged MB is 0.03 ng/ml as a capture antibody.

[Protocol Download](#)

- ELISA

- Immunofluorescence

Immunofluorescence of monoclonal antibody to MB on HeLa cell . [antibody concentration 10 ug/ml]

Gene Info — MB

Entrez GeneID	4151
---------------	----------------------

GeneBank Accession#	NM_005368.2
---------------------	-----------------------------

Protein Accession#	NP_005359.1
--------------------	-----------------------------

Gene Name	MB
-----------	----

Gene Alias	MGC13548, PVALB
------------	-----------------

Gene Description	myoglobin
------------------	-----------

Omim ID	160000
---------	------------------------

Gene Ontology	Hyperlink
---------------	---------------------------

Gene Summary	This gene encodes a member of the globin superfamily and is expressed in skeletal and cardiac muscles. The encoded protein is a haemoprotein contributing to intracellular oxygen storage and transcellular facilitated diffusion of oxygen. At least three alternatively spliced transcript variants encoding the same protein have been reported. [provided by RefSeq]
--------------	--------------------------------------------------------------------------------------------------------------------------------------------------------------------------------------------------------------------------------------------------------------------------------------------------------------------------------------------------------------------------

Other Designations	-
--------------------	---