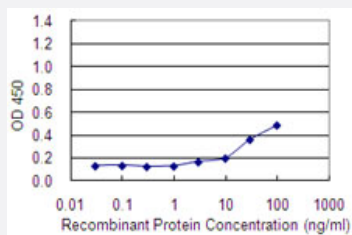


# MAGEA2 monoclonal antibody (M02), clone 1B1

Catalog # H00004101-M02

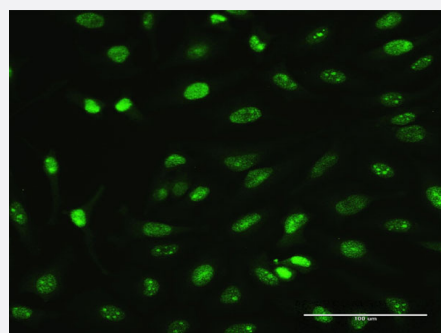
Size 100 ug

## Applications



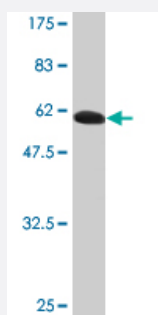
### Sandwich ELISA (Recombinant protein)

Detection limit for recombinant GST tagged MAGEA2 is 1 ng/ml as a capture antibody.



### Immunofluorescence

Immunofluorescence of monoclonal antibody to MAGEA2 on HeLa cell .  
[antibody concentration 20 ug/ml]



Western Blot detection against Immunogen (60.28 KDa) .

## Specification

### Product Description

Mouse monoclonal antibody raised against a full-length recombinant MAGEA2.

Immunogen	MAGEA2 (AAH63681, 1 a.a. ~ 314 a.a) full-length recombinant protein with GST tag. MW of the GST tag alone is 26 KDa.
Sequence	MPLEQRSQHCKPEEGLEARGEALGLVGAQAPATEEQQTASSSSSTLVEVTLGEVPAADSPSPPH SPQGASSFSTTINYTLWRQSDGSSNQEEEGPRMFPDLESEFQAAISRKMVELVHFLLLKYQARE PVTKAEMLESVLRNCQDFFPVIFSKASEYLQLVFGIEVVVEVVPISHLYILVTCLGLSYDGLLGDNQV MPKTGLLIIVLAIIEGDCAPEEKWEELSMLEVFEGREDSVFAHPRKLLMQDLVQENYLEYRQVP GSDPACYEFLWGPRLIETSYVKVLHHTLKIGGEPHISYPPLHERALREGEE
Host	Mouse
Reactivity	Human
Isotype	IgG2a Kappa
Quality Control Testing	Antibody Reactive Against Recombinant Protein. Western Blot detection against Immunogen (60.28 KDa) .
Storage Buffer	In 1x PBS, pH 7.4
Storage Instruction	Store at -20°C or lower. Aliquot to avoid repeated freezing and thawing.

## Applications

- Western Blot (Recombinant protein)

[Protocol Download](#)

- Sandwich ELISA (Recombinant protein)

Detection limit for recombinant GST tagged MAGEA2 is 1 ng/ml as a capture antibody.

[Protocol Download](#)

- ELISA

- Immunofluorescence

Immunofluorescence of monoclonal antibody to MAGEA2 on HeLa cell . [antibody concentration 20 ug/ml]

## Gene Info — MAGEA2

Entrez GeneID [4101](#)

GeneBank Accession# [BC063681](#)

Protein Accession#	<a href="#">AAH63681</a>
Gene Name	MAGEA2
Gene Alias	MAGE2, MAGEA2A, MGC131923
Gene Description	melanoma antigen family A, 2
Omim ID	<a href="#">300173</a>
Gene Ontology	<a href="#">Hyperlink</a>
Gene Summary	<p>This gene is a member of the MAGEA gene family. The members of this family encode proteins with 50 to 80% sequence identity to each other. The promoters and first exons of the MAGEA genes show considerable variability, suggesting that the existence of this gene family enables the same function to be expressed under different transcriptional controls. The MAGEA genes are clustered at chromosomal location Xq28. They have been implicated in some hereditary disorders, such as dyskeratosis congenita. This gene has two identical copies at different loci. Alternatively spliced transcript variants encoding the same protein have been identified for this gene. [provided by RefSeq]</p>
Other Designations	OTTHUMP00000024219 melanoma antigen 2 melanoma-associated antigen 2