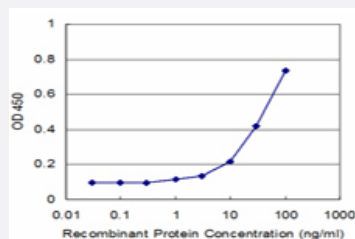


MAGEA1 monoclonal antibody (M01), clone 3H5

Catalog # H00004100-M01

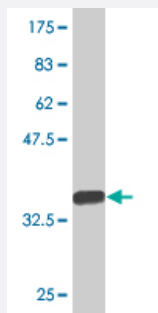
Size 100 ug

Applications



Sandwich ELISA (Recombinant protein)

Detection limit for recombinant GST tagged MAGEA1 is approximately 1ng/ml as a capture antibody.



Western Blot detection against Immunogen (33.88 KDa) .

Specification

Product Description	Mouse monoclonal antibody raised against a partial recombinant MAGEA1.
Immunogen	MAGEA1 (NP_004979, 98 a.a. ~ 171 a.a) partial recombinant protein with GST tag. MW of the GST tag alone is 26 KDa.
Sequence	FRAVITKKVADLVGFLLLKYRAREPVTKAEMLESVIKNYKHCFP EIFGKASESLQLVFGIDVKEADP TGHSYVL
Host	Mouse
Reactivity	Human
Isotype	IgG2a Kappa

Quality Control Testing

Antibody Reactive Against Recombinant Protein.
Western Blot detection against Immunogen (33.88 KDa) .

Storage Buffer

In 1x PBS, pH 7.4

Storage Instruction

Store at -20°C or lower. Aliquot to avoid repeated freezing and thawing.

Applications

- Western Blot (Recombinant protein)

[Protocol Download](#)

- Sandwich ELISA (Recombinant protein)

Detection limit for recombinant GST tagged MAGEA1 is approximately 1ng/ml as a capture antibody.

[Protocol Download](#)

- ELISA

Gene Info — MAGEA1

Entrez GeneID

[4100](#)

GeneBank Accession#

[NM_004988](#)

Protein Accession#

[NP_004979](#)

Gene Name

MAGEA1

Gene Alias

MAGE1, MGC9326

Gene Description

melanoma antigen family A, 1 (directs expression of antigen MZ2-E)

Omim ID

[300016](#)

Gene Ontology

[Hyperlink](#)

Gene Summary

This gene is a member of the MAGEA gene family. The members of this family encode proteins with 50 to 80% sequence identity to each other. The promoters and first exons of the MAGEA gene show considerable variability, suggesting that the existence of this gene family enables the same function to be expressed under different transcriptional controls. The MAGEA genes are clustered at chromosomal location Xq28. They have been implicated in some hereditary disorders, such as dyskeratosis congenita. [provided by RefSeq]

Other Designations

OTTHUMP00000025911|melanoma antigen MAGE-1|melanoma antigen family A 1|melanoma antigen family A, 1|melanoma-associated antigen 1|melanoma-associated antigen MZ2-E
