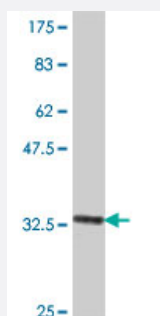


MAGEA1 polyclonal antibody (A01)

Catalog # H00004100-A01

Size 50 uL

Applications



Western Blot detection against Immunogen (34.25 KDa) .

Specification

Product Description	Mouse polyclonal antibody raised against a partial recombinant MAGEA1.
Immunogen	MAGEA1 (NP_004979, 98 a.a. ~ 171 a.a) partial recombinant protein with GST tag.
Sequence	FRAVITKKVADLVGFLLKYLKAREPVTKAEMLESVIKNYKHCPEIFGKASESLQLVFGIDVKEADP TGHSYVL
Host	Mouse
Reactivity	Human
Quality Control Testing	Antibody Reactive Against Recombinant Protein. Western Blot detection against Immunogen (34.25 KDa) .
Storage Buffer	50 % glycerol
Storage Instruction	Store at -20°C or lower. Aliquot to avoid repeated freezing and thawing.

Applications

- Western Blot (Recombinant protein)

[Protocol Download](#)

- ELISA

Gene Info — MAGEA1

Entrez GeneID [4100](#)

GeneBank Accession# [NM_004988](#)

Protein Accession# [NP_004979](#)

Gene Name MAGEA1

Gene Alias MAGE1, MGC9326

Gene Description melanoma antigen family A, 1 (directs expression of antigen MZ2-E)

Omim ID [300016](#)

Gene Ontology [Hyperlink](#)

Gene Summary This gene is a member of the MAGEA gene family. The members of this family encode proteins with 50 to 80% sequence identity to each other. The promoters and first exons of the MAGEA genes show considerable variability, suggesting that the existence of this gene family enables the same function to be expressed under different transcriptional controls. The MAGEA genes are clustered at chromosomal location Xq28. They have been implicated in some hereditary disorders, such as dyskeratosis congenita. [provided by RefSeq]

Other Designations OTTHUMP00000025911|melanoma antigen MAGE-1|melanoma antigen family A 1|melanoma antigen family A, 1|melanoma-associated antigen 1|melanoma-associated antigen MZ2-E