

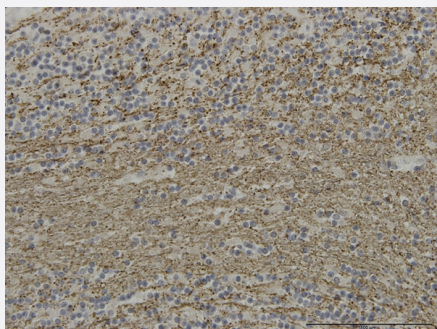
CX Grade

MAG monoclonal antibody (M35J), clone 3C7

Catalog # H00004099-M35J

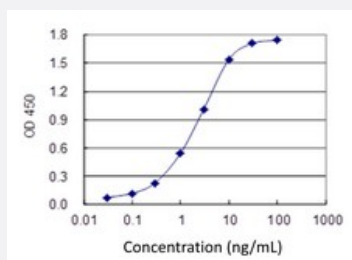
Size 100 ug

Applications



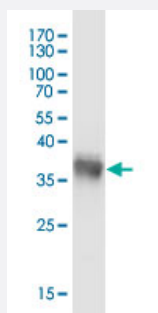
Immunohistochemistry (Formalin/PFA-fixed paraffin-embedded sections)

Immunoperoxidase of monoclonal antibody to MAG on formalin-fixed paraffin-embedded human cerebellum. [antibody concentration 3 ug/ml]



Sandwich ELISA (Recombinant protein)

Detection limit for recombinant GST tagged MAG is 0.03 ng/ml as a capture antibody.



Western Blot detection against Immunogen (35.64 KDa) .

Specification

Product Description

Mouse monoclonal antibody raised against a partial recombinant MAG.
This product is belong to Cell Culture Grade Antibody (CX Grade).

Immunogen	MAG (NP_002352, 119 a.a. ~ 208 a.a) partial recombinant protein with GST tag. MW of the GST tag alone is 26 KDa.
Sequence	GDLGGYNQYTFSEHSVLDIVNTPNIVPPEVVAGTEVEVSCMVPDNCPELRPELSWLGHEGLGE PAVLGRLREDEGTWVQVSLHFVPTR
Host	Mouse
Reactivity	Human
Interspecies Antigen Sequence	Mouse (99); Rat (98)
Preparation Method	Cell Culture Production
Isotype	IgG Mix Kappa
Quality Control Testing	Antibody Reactive Against Recombinant Protein. Western Blot detection against Immunogen (35.64 KDa) .
Storage Buffer	In 1x PBS, pH 7.4
Storage Instruction	Store at -20°C or lower. Aliquot to avoid repeated freezing and thawing.

Applications

- Western Blot (Recombinant protein)

[Protocol Download](#)

- Immunohistochemistry (Formalin/PFA-fixed paraffin-embedded sections)

Immunoperoxidase of monoclonal antibody to MAG on formalin-fixed paraffin-embedded human cerebellum. [antibody concentration 3 ug/ml]

[Protocol Download](#)

- Sandwich ELISA (Recombinant protein)

Detection limit for recombinant GST tagged MAG is 0.03 ng/ml as a capture antibody.

[Protocol Download](#)

- ELISA

Gene Info — MAG

Entrez GeneID	4099
GeneBank Accession#	NM_002361
Protein Accession#	NP_002352
Gene Name	MAG
Gene Alias	GMA, S-MAG, SIGLEC-4A, SIGLEC4A
Gene Description	myelin associated glycoprotein
Omim ID	159460
Gene Ontology	Hyperlink
Gene Summary	The protein encoded by this gene is a type I membrane protein and member of the immunoglobulin superfamily. It is thought to be involved in the process of myelination. It is a lectin that binds to sialylated glycoconjugates and mediates certain myelin-neuron cell-cell interactions. Two alternatively spliced transcripts encoding different isoforms have been described for this gene. [provided by RefSeq]
Other Designations	myelin-associated glycoprotein sialic acid-binding immunoglobulin-like lectin 4A

Pathway

- [Cell adhesion molecules \(CAMs\)](#)

Disease

- [Genetic Predisposition to Disease](#)
- [Multiple Sclerosis](#)
- [Schizophrenia](#)