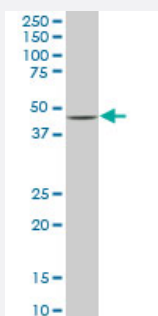


# SMAD7 monoclonal antibody (M07), clone 4G11

Catalog # H00004092-M07

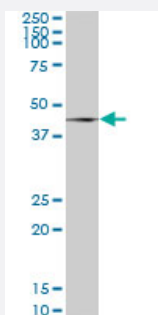
Size 100 ug

## Applications



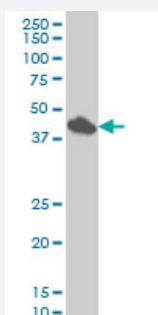
### Western Blot (Tissue lysate)

SMAD7 monoclonal antibody (M07), clone 4G11. Western Blot analysis of SMAD7 expression in human ovarian cancer.



### Western Blot (Tissue lysate)

SMAD7 monoclonal antibody (M07), clone 4G11. Western Blot analysis of SMAD7 expression in human parotid gland.



### Western Blot (Cell lysate)

SMAD7 monoclonal antibody (M07), clone 4G11 Western Blot analysis of SMAD7 expression in HeLa ( Cat # L013V1 ).

## Specification

### Product Description

Mouse monoclonal antibody raised against a partial recombinant SMAD7.

<b>Immunogen</b>	SMAD7 (NP_005895, 160 a.a. ~ 260 a.a) partial recombinant protein with GST tag. MW of the GST tag alone is 26 KDa.
<b>Sequence</b>	CKVFRWPDLRHSSEVKRLCCCESYGKINPELVCCNPHHLSRLCELESPPPYSRYPMDFLKPTA DCPDAVPSSAETGGTNYLAPGGLSDSQLLLEPGDRSH
<b>Host</b>	Mouse
<b>Reactivity</b>	Human
<b>Interspecies Antigen Sequence</b>	Mouse (99); Rat (99)
<b>Isotype</b>	IgG2a Kappa
<b>Quality Control Testing</b>	Antibody Reactive Against Recombinant Protein.
<b>Storage Buffer</b>	In 1x PBS, pH 7.4
<b>Storage Instruction</b>	Store at -20°C or lower. Aliquot to avoid repeated freezing and thawing.

## Applications

- Western Blot (Tissue lysate)

SMAD7 monoclonal antibody (M07), clone 4G11. Western Blot analysis of SMAD7 expression in human ovarian cancer.

[Protocol Download](#)

- Western Blot (Tissue lysate)

SMAD7 monoclonal antibody (M07), clone 4G11. Western Blot analysis of SMAD7 expression in human parotid gland.

[Protocol Download](#)

- Western Blot (Cell lysate)

SMAD7 monoclonal antibody (M07), clone 4G11 Western Blot analysis of SMAD7 expression in HeLa ( Cat # L013V1 ).

[Protocol Download](#)

- ELISA

## Gene Info — SMAD7

Entrez GeneID

[4092](#)

GeneBank Accession#	<a href="#">NM_005904</a>
Protein Accession#	<a href="#">NP_005895</a>
Gene Name	SMAD7
Gene Alias	CRCS3, FLJ16482, MADH7, MADH8
Gene Description	SMAD family member 7
Omim ID	<a href="#">114500 602932</a>
Gene Ontology	<a href="#">Hyperlink</a>
Gene Summary	Drosophila) homolog 7 MAD
Other Designations	MAD (mothers against decapentaplegic, Drosophila) homolog 7 MAD, mothers against decapentaplegic homolog 7 Mothers against decapentaplegic, drosophila, homolog of, 7 SMAD, mothers against DPP homolog 7

## Pathway

- [TGF-beta signaling pathway](#)

## Disease

- [Breast cancer](#)
- [Breast Neoplasms](#)
- [Carcinoma](#)
- [Colon cancer](#)
- [Colonic Neoplasms](#)
- [Colorectal Neoplasms](#)
- [Genetic Predisposition to Disease](#)
- [Head and Neck Neoplasms](#)
- [Keloid](#)
- [Kidney Neoplasms](#)
- [Leukemia](#)

- [Neoplasm Recurrence](#)
- [Neoplasms](#)
- [Obesity](#)
- [Ovarian Failure](#)
- [Polycystic Ovary Syndrome](#)
- [Puberty](#)
- [Thrombophilia](#)
- [Thyroid Neoplasms](#)
- [Tobacco Use Disorder](#)
- [Uterine Cervical Neoplasms](#)