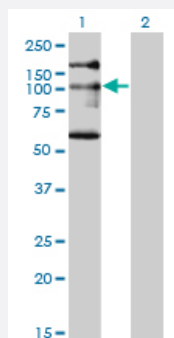


NBR1 monoclonal antibody (M05A), clone 5C3

Catalog # H00004077-M05A

Size 200 uL

Applications

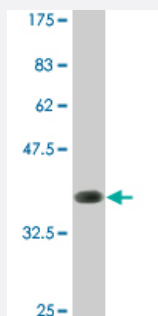


Western Blot (Transfected lysate)

Western Blot analysis of NBR1 expression in transfected 293T cell line by NBR1 monoclonal antibody (M05A), clone 5C3.

Lane 1: NBR1 transfected lysate(107.4 KDa).

Lane 2: Non-transfected lysate.



Western Blot detection against Immunogen (36.19 KDa) .

Specification

Product Description

Mouse monoclonal antibody raised against a partial recombinant NBR1.

Immunogen

NBR1 (NP_005890, 2 a.a. ~ 96 a.a) partial recombinant protein with GST tag. MW of the GST tag alone is 26 KDa.

Sequence

EPQVTLNVTFKNEIQSFLVSDPENTTWADIEAMVKVSFDLNTIQIKYLDEENEEVSINSQGEYEEAL
KMAVKQGNQLQMQVHEGHHVVD EAPPPV

Host

Mouse

Reactivity

Human

Isotype

IgG2a Kappa

Quality Control Testing

Antibody Reactive Against Recombinant Protein.
Western Blot detection against Immunogen (36.19 KDa) .

Storage Buffer

In ascites fluid

Storage Instruction

Store at -20°C or lower. Aliquot to avoid repeated freezing and thawing.

Applications

- Western Blot (Transfected lysate)

Western Blot analysis of NBR1 expression in transfected 293T cell line by NBR1 monoclonal antibody (M05A), clone 5C3.

Lane 1: NBR1 transfected lysate(107.4 KDa).

Lane 2: Non-transfected lysate.

[Protocol Download](#)

- Western Blot (Recombinant protein)

[Protocol Download](#)

- ELISA

Gene Info — NBR1

Entrez GeneID

[4077](#)

GeneBank Accession#

[NM_005899](#)

Protein Accession#

[NP_005890](#)

Gene Name

NBR1

Gene Alias

1A1-3B, KIAA0049, M17S2, MIG19

Gene Description

neighbor of BRCA1 gene 1

Omim ID

[166945](#)

Gene Ontology

[Hyperlink](#)

Gene Summary

The protein encoded by this gene was originally identified as an ovarian tumor antigen monitored in ovarian cancer. The encoded protein contains a B-box/coiled coil motif, which is present in many genes with transformation potential, but the function of this protein is unknown. This gene is located on a region of chromosome 17q21.1 that is in close proximity to tumor suppressor gene BRCA1. Three alternatively spliced variants encoding the same protein have been identified for this gene. [provided by RefSeq]

Other Designations

membrane component, chromosome 17, surface marker 2 (ovarian carcinoma antigen CA125)|migration-inducing protein 19

Disease

- [Tobacco Use Disorder](#)