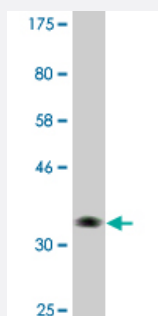


NBR1 monoclonal antibody (M03A), clone 3D3

Catalog # H00004077-M03A

Size 200 uL

Applications



Western Blot detection against Immunogen (36.19 KDa) .

Specification

Product Description	Mouse monoclonal antibody raised against a partial recombinant NBR1.
Immunogen	NBR1 (NP_005890, 2 a.a. ~ 96 a.a) partial recombinant protein with GST tag. MW of the GST tag alone is 26 KDa.
Sequence	EPQVTLNVTFKNEIQSFLVSDPENTTWADIEAMVKVSFDLNTIQIKYLDEENEEVSINSQGEYEEAL KMAVKQGNQLQMQRVHEGHHVVDEAPPPV
Host	Mouse
Reactivity	Human
Isotype	IgG1 Kappa
Quality Control Testing	Antibody Reactive Against Recombinant Protein. Western Blot detection against Immunogen (36.19 KDa) .
Storage Buffer	In ascites fluid
Storage Instruction	Store at -20°C or lower. Aliquot to avoid repeated freezing and thawing.

Applications

- Western Blot (Recombinant protein)

[Protocol Download](#)

- ELISA

Gene Info — NBR1

Entrez GeneID [4077](#)

GeneBank Accession# [NM_005899](#)

Protein Accession# [NP_005890](#)

Gene Name NBR1

Gene Alias 1A1-3B, KIAA0049, M17S2, MIG19

Gene Description neighbor of BRCA1 gene 1

Omim ID [166945](#)

Gene Ontology [Hyperlink](#)

Gene Summary The protein encoded by this gene was originally identified as an ovarian tumor antigen monitored in ovarian cancer. The encoded protein contains a B-box/coiled coil motif, which is present in many genes with transformation potential, but the function of this protein is unknown. This gene is located on a region of chromosome 17q21.1 that is in close proximity to tumor suppressor gene BRCA1. Three alternatively spliced variants encoding the same protein have been identified for this gene. [provided by RefSeq]

Other Designations membrane component, chromosome 17, surface marker 2 (ovarian carcinoma antigen CA125) migration-inducing protein 19

Disease

- [Tobacco Use Disorder](#)