

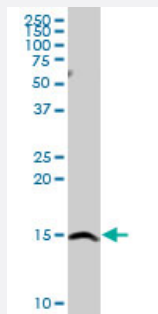
MaxPab®

# SH2D1A purified MaxPab rabbit polyclonal antibody (D01P)

Catalog # H00004068-D01P

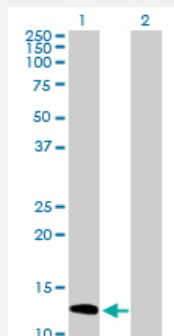
Size 100 ug

## Applications



### Western Blot (Cell lysate)

SH2D1A MaxPab rabbit polyclonal antibody. Western Blot analysis of SH2D1A expression in Jurkat.



### Western Blot (Transfected lysate)

Western Blot analysis of SH2D1A expression in transfected 293T cell line ([H00004068-T01](#)) by SH2D1A MaxPab polyclonal antibody.

Lane 1: SH2D1A transfected lysate(14.20 KDa).

Lane 2: Non-transfected lysate.

## Specification

Product Description	Rabbit polyclonal antibody raised against a full-length human SH2D1A protein.
Immunogen	SH2D1A (NP_002342.1, 1 a.a. ~ 128 a.a) full-length human protein.
Sequence	MDAVAVYHGKISRETGEKLLLATGLDGSYLLRDSESVPGVYCLCVLYHGYYTYRVSQTETGSWSA ETAPGVHKRYFRKIKNLISAFQKPDQGIVPLQYPVEKKSSARSTQGTTGIREDPDVCLKAP
Host	Rabbit
Reactivity	Human

Interspecies Antigen Sequence	Mouse (88); Rat (89)
Quality Control Testing	Antibody reactive against mammalian transfected lysate.
Storage Buffer	In 1x PBS, pH 7.4
Storage Instruction	Store at -20°C or lower. Aliquot to avoid repeated freezing and thawing.

## Applications

- Western Blot (Cell lysate)

SH2D1A MaxPab rabbit polyclonal antibody. Western Blot analysis of SH2D1A expression in Jurkat.

[Protocol Download](#)

- Western Blot (Transfected lysate)

Western Blot analysis of SH2D1A expression in transfected 293T cell line ([H00004068-T01](#)) by SH2D1A MaxPab polyclonal antibody.

Lane 1: SH2D1A transfected lysate(14.20 KDa).

Lane 2: Non-transfected lysate.

[Protocol Download](#)

## Gene Info — SH2D1A

Entrez GeneID	<a href="#">4068</a>
GeneBank Accession#	<a href="#">NM_002351</a>
Protein Accession#	<a href="#">NP_002342.1</a>
Gene Name	SH2D1A
Gene Alias	DSHP, EBVS, FLJ18687, FLJ92177, IMD5, LYP, MTCP1, SAP, XLP, XLPD
Gene Description	SH2 domain protein 1A
Omim ID	<a href="#">300490</a> <a href="#">308240</a>
Gene Ontology	<a href="#">Hyperlink</a>

**Gene Summary**

This gene encodes a protein that plays a major role in the bidirectional stimulation of T and B cells . This protein contains an SH2 domain and a short tail. It associates with the signaling lymphocyte -activation molecule, thereby acting as an inhibitor of this transmembrane protein by blocking the recruitment of the SH2-domain-containing signal-transduction molecule SHP-2 to its docking site. This protein can also bind to other related surface molecules that are expressed on activated T, B and NK cells, thereby modifying signal transduction pathways in these cells. Mutations in this gene cause lymphoproliferative syndrome X-linked type 1 or Duncan disease, a rare immunodeficiency characterized by extreme susceptibility to infection with Epstein-Barr virus, with symptoms including severe mononucleosis and malignant lymphoma. Multiple transcript variants encoding different isoforms have been found for this gene. [provided by RefSeq]

**Other Designations**

Duncan's disease|OTTHUMP00000023976|SLAM-associated protein|T cell signal transduction molecule SAP|signaling lymphocyte activation molecule-associated protein

**Pathway**

- [Natural killer cell mediated cytotoxicity](#)

**Disease**

- [Common Variable Immunodeficiency](#)
- [Epstein-Barr Virus Infections](#)
- [Genetic Predisposition to Disease](#)
- [Immunologic Deficiency Syndromes](#)
- [Infectious Mononucleosis](#)
- [Lymphoma](#)
- [Lymphoproliferative Disorders](#)
- [Severe Combined Immunodeficiency](#)