

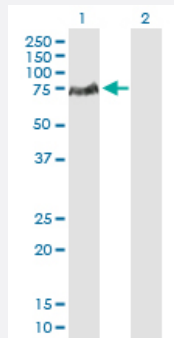
MaxPab®

# LCP2 purified MaxPab rabbit polyclonal antibody (D01P)

Catalog # H00003937-D01P

Size 100 ug

## Applications



### Western Blot (Transfected lysate)

Western Blot analysis of LCP2 expression in transfected 293T cell line ([H00003937-T02](#)) by LCP2 MaxPab polyclonal antibody.

Lane 1: LCP2 transfected lysate(60.20 KDa).

Lane 2: Non-transfected lysate.

## Specification

### Product Description

Rabbit polyclonal antibody raised against a full-length human LCP2 protein.

### Immunogen

LCP2 (AAH16618.1, 1 a.a. ~ 533 a.a) full-length human protein.

### Sequence

MALRNVPRSEVLGWDPDSLADYFKKLNYKDCEKAVKKYHIDGARFLNLTENDIQKFKLRVPILS  
KLSQEINKNEERRSIFTRKPQVPRFPEETESHEEDNGGWSSFEEDDYESPNDQDGEDDGDYE  
SPNEEEEAPVEDDADYEPSPSNDEEALQNSILPAKPFNSNSMYDRPPSGKTPQQPPVPPQRP  
MAALPPPAGRNHSPPLPPQTNHEEPSRSRNHKTAKLPAPSIDRSTKPPPLDRSLAPFDREPFTL  
GKKPPFSDKPSIPAGRSLGEHLPKIQKPPLPTTERHERSSPLGKKPPVPKHGWGPDRRENDE  
DDVHQRPLPQPALLPMSSNTFSPRSTKPSPMNPLPSSHMPGAFSESNSFFQSASLPPYFSQG  
PSNRPPIRAEGRNFLPLPNKPRPPSPAEEENSLNEEWYVSITRPEAEALRKINQDGTFLVRDS  
SKKTTTNPYVLMVLYKDKVYNIQIRYQKESQVYLLGTGLRGKEDFLSVSDIIDYFRKMPLLLIDGKNR  
GSRYQCTLTHAAGYP

### Host

Rabbit

### Reactivity

Human

### Quality Control Testing

Antibody reactive against mammalian transfected lysate.

### Storage Buffer

In 1x PBS, pH 7.4

## Storage Instruction

Store at -20°C or lower. Aliquot to avoid repeated freezing and thawing.

## Applications

- Western Blot (Transfected lysate)

Western Blot analysis of LCP2 expression in transfected 293T cell line ([H00003937-T02](#)) by LCP2 MaxPab polyclonal antibody.

Lane 1: LCP2 transfected lysate(60.20 KDa).

Lane 2: Non-transfected lysate.

[Protocol Download](#)

## Gene Info — LCP2

Entrez GeneID [3937](#)

GeneBank Accession# [NM\\_005565](#)

Protein Accession# [AAH16618.1](#)

Gene Name LCP2

Gene Alias SLP-76, SLP76

Gene Description lymphocyte cytosolic protein 2 (SH2 domain containing leukocyte protein of 76kDa)

Omim ID [601603](#)

Gene Ontology [Hyperlink](#)

**Gene Summary**

SLP-76 was originally identified as a substrate of the ZAP-70 protein tyrosine kinase following T cell receptor (TCR) ligation in the leukemic T cell line Jurkat. The SLP-76 locus has been localized to human chromosome 5q33 and the gene structure has been partially characterized in mice. The human and murine cDNAs both encode 533 amino acid proteins that are 72% identical and comprised of three modular domains. The NH2-terminus contains an acidic region that includes a PEST domain and several tyrosine residues which are phosphorylated following TCR ligation. SLP-76 also contains a central proline-rich domain and a COOH-terminal SH2 domain. A number of additional proteins have been identified that associate with SLP-76 both constitutively and inducibly following receptor ligation, supporting the notion that SLP-76 functions as an adaptor or scaffold protein. Studies using SLP-76 deficient T cell lines or mice have provided strong evidence that SLP-76 plays a positive role in promoting T cell development and activation as well as mast cell and platelet function. [provided by RefSeq]

**Other Designations**

76 kDa tyrosine phosphoprotein|SH2 domain-containing leukocyte protein of 76kD|lymphocyte cytosolic protein 2|lymphocyte cytosolic protein 2 (SH2 domain-containing leukocyte protein of 76kDa)

## Pathway

- [Fc epsilon RI signaling pathway](#)
- [Natural killer cell mediated cytotoxicity](#)
- [T cell receptor signaling pathway](#)

## Disease

- [Disease Progression](#)
- [Disease Susceptibility](#)
- [HIV Infections](#)
- [Lymphedema](#)