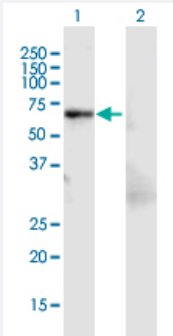


MaxPab®

LCP1 MaxPab mouse polyclonal antibody (B01)

Catalog # H00003936-B01 Size 50 uL

Applications



Western Blot (Transfected lysate)

Western Blot analysis of LCP1 expression in transfected 293T cell line ([H00003936-T01](#)) by LCP1 MaxPab polyclonal antibody.

Lane 1: LCP1 transfected lysate(70.3 KDa).
Lane 2: Non-transfected lysate.

Specification	
Product Description	Mouse polyclonal antibody raised against a full-length human LCP1 protein.
Immunogen	LCP1 (NP_002289.1, 1 a.a. ~ 627 a.a) full-length human protein.
Sequence	MARGSVSDEEMMELREAFKVDTDGNGYSFNELNDLFKAACLPLPGYRVREITENLMATGDLD QDGRISFDEFIKIFHGLKSTDVAKTFRKAINKKEGICAIGGTSEQSSVGTQHSYSEEEKYAFVNWINK ALENDPDCRHVIPMNPNTNDFNAVGDMVLCCKMINLSVPDTIDERTINKKKLTPFTIQENLNLALNS ASAIGCHVVNIGAEDLKEGKPYLVLLGWQVIKIGLFADIELSRNEALIALREGESLEDLMKLSPEE LLLRWANYHLENAGCNKIGNFSTDIKDSKAYHLLLEQVAPKGDEEGVPAVVIDMSGLEKDDIQRA ECMLQQAERLGCQRQFVTATDVVRGNPKLNLAFIANLFRYPALHKPENQDIDWGALEGETREERT FRNWMNSLGVNPRVNHLYSDLSDALVIFQLYEKIKVPVDWNRVNKPPYPKLGGNMKKLENCNYA VELGKNQAKFSLVGIGGQDLNEGNRTLTLALWQLMRRYTLNILEEIGGGQKVNDIIVNWVNETLR EAEKSSSISSFKDPKISTSLPVLDLIDAIQPGSINYDLLKTENLNDDEKLNNAKYAISMARKIGARVYA LPEDLVEVNPKMVMTVFACLMGKGMKRV
Host	Mouse
Reactivity	Human
Interspecies Antigen Sequence	Mouse (97); Rat (96)

Quality Control Testing	Antibody reactive against mammalian transfected lysate.
Storage Buffer	No additive
Storage Instruction	Store at -20°C or lower. Aliquot to avoid repeated freezing and thawing.
Note	For IHC and IF applications, antibody purification with Protein A will be needed prior to use.

Applications

- Western Blot (Transfected lysate)

Western Blot analysis of LCP1 expression in transfected 293T cell line ([H00003936-T01](#)) by LCP1 MaxPab polyclonal antibody.

Lane 1: LCP1 transfected lysate(70.3 KDa).

Lane 2: Non-transfected lysate.

[Protocol Download](#)

Gene Info — LCP1

Entrez GeneID	3936
GeneBank Accession#	NM_002298.2
Protein Accession#	NP_002289.1
Gene Name	LCP1
Gene Alias	CP64, DKFZp781A23186, FLJ25423, FLJ26114, FLJ39956, L-PLASTIN, LC64P, LPL, PLS2
Gene Description	lymphocyte cytosolic protein 1 (L-plastin)
Omim ID	153430
Gene Ontology	Hyperlink
Gene Summary	<p>Plastins are a family of actin-binding proteins that are conserved throughout eukaryote evolution and expressed in most tissues of higher eukaryotes. In humans, two ubiquitous plastin isoforms (L and T) have been identified. Plastin 1 (otherwise known as Fimbrin) is a third distinct plastin isoform which is specifically expressed at high levels in the small intestine. The L isoform is expressed only in hemopoietic cell lineages, while the T isoform has been found in all other normal cells of solid tissues that have replicative potential (fibroblasts, endothelial cells, epithelial cells, melanocytes, etc.). However, L-plastin has been found in many types of malignant human cells of non-hemopoietic origin suggesting that its expression is induced accompanying tumorigenesis in solid tissues. [provided by RefSeq]</p>

Other Designations

L-plastin|L-plastin (Lymphocyte cytosolic protein 1) (LCP-1) (LC64P)|Lymphocyte cytosolic protein-1 (plasmin)|OTTHUMP00000018362|bA139H14.1 (lymphocyte cytosolic protein 1 (L-plastin))|plasmin 2

Disease

- [Diabetes Mellitus](#)
- [Genetic Predisposition to Disease](#)