

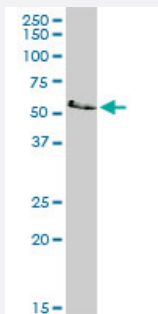
MaxPab®

LCK purified MaxPab rabbit polyclonal antibody (D01P)

Catalog # H00003932-D01P

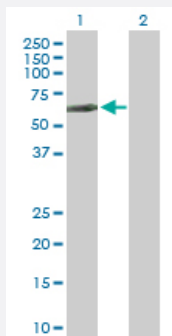
Size 100 ug

Applications



Western Blot (Cell lysate)

LCK MaxPab rabbit polyclonal antibody. Western Blot analysis of LCK expression in Jurkat.

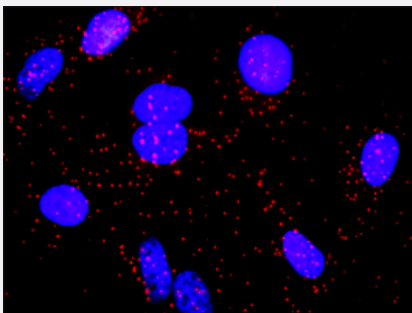


Western Blot (Transfected lysate)

Western Blot analysis of LCK expression in transfected 293T cell line ([H00003932-T02](#)) by LCK MaxPab polyclonal antibody.

Lane 1: LCK transfected lysate(61.20 KDa).

Lane 2: Non-transfected lysate.



In situ Proximity Ligation Assay (Cell)

Proximity Ligation Analysis of protein-protein interactions between LCK and CD55. HeLa cells were stained with anti-LCK rabbit purified polyclonal 1:1200 and anti-CD55 mouse monoclonal antibody 1:50. Each red dot represents the detection of protein-protein interaction complex, and nuclei were counterstained with DAPI (blue).

Specification

Product Description

Rabbit polyclonal antibody raised against a full-length human LCK protein.

Immunogen	LCK (AAH13200.1, 1 a.a. ~ 539 a.a) full-length human protein.
Sequence	MGCGCSSHPEDDWMENIDVCENCHYPVPLDGGKGTLLIRNGSEVRDPLVTYEGSNPPASPLQDN LVIALHSYEP SHDGLGFEKGEQLRILEQSGEWWKAQSLTTGQEGFIPNFVAKANSLEPEPWFF KNLSRKDAERQLLAPGNTHGSFLIRESESTAGSFSLSVRDFDQNGGEVVKHYKIRNLDNGGFYISP RITFPGLHELVRHYTNASDGLCTRLSRPCQTQKPQKPWWEDEWEVPRETLKLVERLGAGQFGE VWMGYNGHTKVAVKSLKQGSMSPD AFLAEANLMKQLQHQLVRLYAVVTQEPYITEYMENDTL LDSQLEEKGLGASPWGNLGQQLLLPTGSLVDFLKTSPGKLTINKLLDMAAQIAEGMAFIEERNYI HRDLRAANILVSDTLCKIADFGARLIEDNEYTAREGAKFPIKWTAP EAINYGTFTIKSDVWSFGILL TEIVTHGRIPYPGMTNPEVIQNLERGYRMVRPDNCPEELYQLMRLCWKERPEDRPTFDYLRVLE DFFTATEGQYQPQP
Host	Rabbit
Reactivity	Human
Quality Control Testing	Antibody reactive against mammalian transfected lysate.
Storage Buffer	In 1x PBS, pH 7.4
Storage Instruction	Store at -20°C or lower. Aliquot to avoid repeated freezing and thawing.

Applications

- Western Blot (Cell lysate)

LCK MaxPab rabbit polyclonal antibody. Western Blot analysis of LCK expression in Jurkat.

[Protocol Download](#)

- Western Blot (Transfected lysate)

Western Blot analysis of LCK expression in transfected 293T cell line ([H00003932-T02](#)) by LCK MaxPab polyclonal antibody.

Lane 1: LCK transfected lysate(61.20 KDa).

Lane 2: Non-transfected lysate.

[Protocol Download](#)

- In situ* Proximity Ligation Assay (Cell)

Proximity Ligation Analysis of protein-protein interactions between LCK and CD55. HeLa cells were stained with anti-LCK rabbit purified polyclonal 1:1200 and anti-CD55 mouse monoclonal antibody 1:50. Each red dot represents the detection of protein-protein interaction complex, and nuclei were counterstained with DAPI (blue).

Gene Info — LCK

Entrez GeneID

[3932](#)

GeneBank Accession#	BC013200.1
Protein Accession#	AAH13200.1
Gene Name	LCK
Gene Alias	YT16, p56lck, pp58lck
Gene Description	lymphocyte-specific protein tyrosine kinase
Omim ID	153390
Gene Ontology	Hyperlink
Gene Summary	This gene is a member of the Src family of protein tyrosine kinases (PTKs). The encoded protein is a key signaling molecule in the selection and maturation of developing T-cells. It contains N-terminal sites for myristylation and palmitoylation, a PTK domain, and SH2 and SH3 domains which are involved in mediating protein-protein interactions with phosphotyrosine-containing and proline-rich motifs, respectively. The protein localizes to the plasma membrane and pericentrosomal vesicles, and binds to cell surface receptors, including CD4 and CD8, and other signaling molecules. Multiple alternatively spliced variants, encoding the same protein, have been described. [provided by RefSeq]
Other Designations	T-lymphocyte specific protein tyrosine kinase p56lck p56(LSTRA) protein-tyrosine kinase protein tyrosine kinase proto-oncogene tyrosine-protein kinase LCK

Pathway

- [Natural killer cell mediated cytotoxicity](#)
- [Primary immunodeficiency](#)
- [T cell receptor signaling pathway](#)

Disease

- [HIV Infections](#)
- [Tobacco Use Disorder](#)