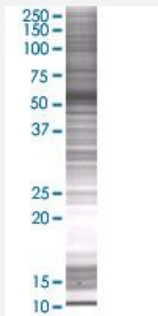


KRT7 293T Cell Transient Overexpression Lysate(Denatured)

Catalog # H00003855-T01

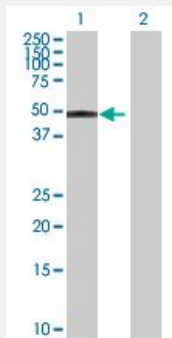
Size 100 uL

Applications



SDS-PAGE Gel

KRT7 transfected lysate.



Western Blot

Lane 1: KRT7 transfected lysate (51.7 KDa)

Lane 2: Non-transfected lysate.

Specification

Transfected Cell Line	293T
Plasmid	pCMV-KRT7 full-length
Host	Human
Theoretical MW (kDa)	51.7
Interspecies Antigen Sequence	Mouse (82); Rat (81)

Quality Control Testing

Transient overexpression cell lysate was tested with Anti-KRT7 antibody ([H00003855-B01](#)) by Western Blots.
 SDS-PAGE Gel
 KRT7 transfected lysate.
 Western Blot
 Lane 1: KRT7 transfected lysate (51.7 KDa)
 Lane 2: Non-transfected lysate.

Storage Buffer

1X Sample Buffer (50 mM Tris-HCl, 2% SDS, 10% glycerol, 300 mM 2-mercaptoethanol, 0.01% Bromophenol blue)

Storage Instruction

Store at -80°C. Aliquot to avoid repeated freezing and thawing.

Applications

- Western Blot

Gene Info — KRT7

Entrez GeneID

[3855](#)

GeneBank Accession#

[BC002700.2](#)

Protein Accession#

[AAH02700.1](#)

Gene Name

KRT7

Gene Alias

CK7, K2C7, K7, MGC129731, MGC3625, SCL

Gene Description

keratin 7

Omim ID

[148059](#)

Gene Ontology

[Hyperlink](#)

Gene Summary

The protein encoded by this gene is a member of the keratin gene family. The type II cytokeratins consist of basic or neutral proteins which are arranged in pairs of heterotypic keratin chains coexpressed during differentiation of simple and stratified epithelial tissues. This type II cytokeratin is specifically expressed in the simple epithelia lining the cavities of the internal organs and in the gland ducts and blood vessels. The genes encoding the type II cytokeratins are clustered in a region of chromosome 12q12-q13. Alternative splicing may result in several transcript variants; however, not all variants have been fully described. [provided by RefSeq]

Other Designations

cytokeratin 7|keratin, 55K type II cytoskeletal|keratin, simple epithelial type I, K7|keratin, type II cytoskeletal 7|sarcolectin|type II mesothelial keratin K7