

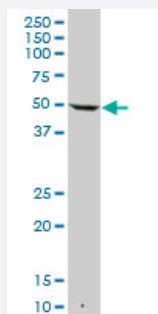
MaxPab®

KRT7 purified MaxPab mouse polyclonal antibody (B01P)

Catalog # H00003855-B01P

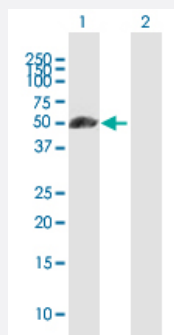
Size 50 ug

Applications



Western Blot (Tissue lysate)

KRT7 MaxPab polyclonal antibody. Western Blot analysis of KRT7 expression in human liver.

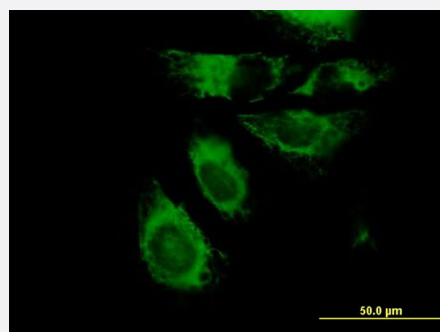


Western Blot (Transfected lysate)

Western Blot analysis of KRT7 expression in transfected 293T cell line ([H00003855-T01](#)) by KRT7 MaxPab polyclonal antibody.

Lane 1: KRT7 transfected lysate(51.59 KDa).

Lane 2: Non-transfected lysate.



Immunofluorescence

Immunofluorescence of purified MaxPab antibody to KRT7 on HeLa cell. [antibody concentration 10 ug/ml]

Specification

Product Description

Mouse polyclonal antibody raised against a full-length human KRT7 protein.

Immunogen	KRT7 (AAH02700.1, 1 a.a. ~ 469 a.a) full-length human protein.
Sequence	MSIHFSPPVFTSRSAAFSGRGAQVRLSSARPGGLGSSSLYGLGASRPRVAVRSAYGGPVGAGIR EVTINQSL LAPRLDADPSLQVRVQEESEIQIKTLNNKFASFIDKVRFLQQNKLLKTKWTLLQEQK SAKSSRLPDIFEAQIAGLRGQLEALQVDGGRLEAELRSMQDVVEDFKNKYEDEINRRTAAENEFV VLKKDVEDAAYMSKVELEAKVDALNDEINFLRTLNETELTELQSQISDTSVVLSDMNSRSLDLGIIA EVKAQYEEAMAKCSRAEAEAWYQTKFETLQAQAGKHGDDLNRNTRNEISEMNRAIQLQAEIDNIKN QRAKLEAAIAEAEERGELALKDARAKQEELEAALQRAKQDMARQLREYQELMSVKLALDIEIATYR KLLEGEESRLAGDGVGAVNISVMNSTGGSSSGGGIGLTLGGTMGSNALSFSSSAGPGLLKAYSIR TASASRRSARD
Host	Mouse
Reactivity	Human
Interspecies Antigen Sequence	Mouse (82); Rat (81)
Quality Control Testing	Antibody reactive against mammalian transfected lysate.
Storage Buffer	In 1x PBS, pH 7.4
Storage Instruction	Store at -20°C or lower. Aliquot to avoid repeated freezing and thawing.

Applications

- Western Blot (Tissue lysate)

KRT7 MaxPab polyclonal antibody. Western Blot analysis of KRT7 expression in human liver.

[Protocol Download](#)

- Western Blot (Transfected lysate)

Western Blot analysis of KRT7 expression in transfected 293T cell line ([H00003855-T01](#)) by KRT7 MaxPab polyclonal antibody.

Lane 1: KRT7 transfected lysate(51.59 KDa).

Lane 2: Non-transfected lysate.

[Protocol Download](#)

- Immunofluorescence

Immunofluorescence of purified MaxPab antibody to KRT7 on HeLa cell. [antibody concentration 10 ug/ml]

Gene Info — KRT7

Entrez GeneID

[3855](#)

GeneBank Accession#	BC002700.2
Protein Accession#	AAH02700.1
Gene Name	KRT7
Gene Alias	CK7, K2C7, K7, MGC129731, MGC3625, SCL
Gene Description	keratin 7
Omim ID	148059
Gene Ontology	Hyperlink
Gene Summary	<p>The protein encoded by this gene is a member of the keratin gene family. The type II cytokeratins consist of basic or neutral proteins which are arranged in pairs of heterotypic keratin chains coexpressed during differentiation of simple and stratified epithelial tissues. This type II cytokeratin is specifically expressed in the simple epithelia lining the cavities of the internal organs and in the gland ducts and blood vessels. The genes encoding the type II cytokeratins are clustered in a region of chromosome 12q12-q13. Alternative splicing may result in several transcript variants; however, not all variants have been fully described. [provided by RefSeq]</p>
Other Designations	cytokeratin 7 keratin, 55K type II cytoskeletal keratin, simple epithelial type I, K7 keratin, type II cytoskeletal 7 sarcolectin type II mesothelial keratin K7