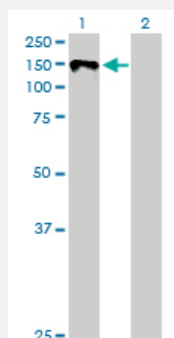


MaxPab®

KIT purified MaxPab rabbit polyclonal antibody (D01P)

Catalog # H00003815-D01P Size 100 ug

Applications

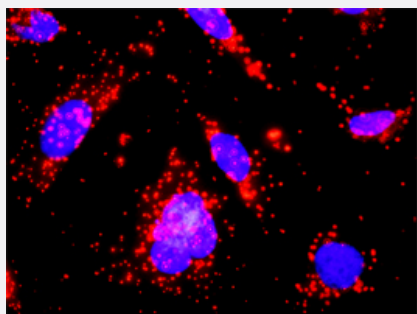


Western Blot (Transfected lysate)

Western Blot analysis of KIT expression in transfected 293T cell line ([H00003815-T01](#)) by KIT MaxPab polyclonal antibody.

Lane 1: KIT transfected lysate(109.90 KDa).

Lane 2: Non-transfected lysate.



In situ Proximity Ligation Assay (Cell)

Proximity Ligation Analysis of protein-protein interactions between KIT and CSF2RA. HeLa cells were stained with anti-KIT rabbit purified polyclonal 1:1200 and anti-CSF2RA mouse monoclonal antibody 1:50. Each red dot represents the detection of protein-protein interaction complex, and nuclei were counterstained with DAPI (blue).

Specification

Product Description Rabbit polyclonal antibody raised against a full-length human KIT protein.

Immunogen KIT (AAH71593.1, 1 a.a. ~ 976 a.a) full-length human protein.

Sequence	MRGARGAWDFLCVLLLLLRVQTGSSQPSVSPGEPSPPSIHPGKSDLIVRVGDEIRLLCTDPGFVK WTFEILDETENKQNEWITEKAEATNTGKYCTNKHGLSNSIYVVRDPAKFLVDRSLYGKEDND TLVRCPLTDPEVTNYSKGCQKPLPKDLRFIPDPKAGIMIKSVKRAYHRLCLHCSVDQEGKSVLS EKFILKVRPAFKAVPVVSVKASYLLREGEEFTVTCTIKDVSSSVYSTWKRENSQTKLQEKYNSW HHGDFNYERQATLTISSARVNDSGVFMCYANNTFGSANVTTTLEVVDKGFNIFPMINTTVFVNDGE NVDLIVEYEAFFPKPEHQWYMNRTFTDKWEDYPKSENESENIRYVSELHLTRLKGTGGTYTFLVS NSDVNAIAFNVVNTKPEILTYDRLVNGMLQCVAAGFPEPTIDWYFCPGTEQRCSASVLPVDVQ TLNSSGPPFGKLVVQSSIDSSAFKHNGTVECKAYNDVGKTSAYFNFAFKGNKEQIHPHTLFTPLL IGFVIVAGMMCIIVMILTYKYLQKPMYEVQWKVVEEINGNNYVYDPTQLPYDHKWEFPRNRLSFGKT LGAGAFGKVVVEATAYGLIKSDAAMTVAVKMLKPSAHL TEREALMSELKVLSYLGNHMNVNLLGA CTIGGPTLVITEYCCYGDLLNFLRRKRDSFICSKQEDHAAEAALYNLLHSSKESSCSDSTNEYMDMK PGVSYVPTKADKRRSVRIGSYIERDVTAPIMEDDELAIDLEDLLSFSYQVAKGMAFLASKNCIHRD LAARNILLTHGRITKICDFGLARDIKNDSNYVVKGNARLPVKWMAHESIFNCVYTFESDVWSYGIFL WELFSLGSSPYGMPVDSKFYKMIKEGFRMLSPEHAPAEMYDIMKTCWDADPLKRPTFKQVQLI EKQISESTNHYSNLANCSPNRQKPVVDHSVRINSVGSTASSSQPLLHDDV
Host	Rabbit
Reactivity	Human
Quality Control Testing	Antibody reactive against mammalian transfected lysate.
Storage Buffer	In 1x PBS, pH 7.4
Storage Instruction	Store at -20°C or lower. Aliquot to avoid repeated freezing and thawing.

Applications

- Western Blot (Transfected lysate)

Western Blot analysis of KIT expression in transfected 293T cell line ([H00003815-T01](#)) by KIT MaxPab polyclonal antibody.

Lane 1: KIT transfected lysate(109.90 KDa).

Lane 2: Non-transfected lysate.

[Protocol Download](#)

- In situ* Proximity Ligation Assay (Cell)

Proximity Ligation Analysis of protein-protein interactions between KIT and CSF2RA. HeLa cells were stained with anti-KIT rabbit purified polyclonal 1:1200 and anti-CSF2RA mouse monoclonal antibody 1:50. Each red dot represents the detection of protein-protein interaction complex, and nuclei were counterstained with DAPI (blue).

Gene Info — KIT

Entrez GeneID [3815](#)

GeneBank Accession# [BC071593](#)

Protein Accession#	AAH71593.1
Gene Name	KIT
Gene Alias	C-Kit, CD117, PBT, SCFR
Gene Description	v-kit Hardy-Zuckerman 4 feline sarcoma viral oncogene homolog
Omim ID	164920 172800 273300 601626 606764
Gene Ontology	Hyperlink
Gene Summary	This gene encodes the human homolog of the proto-oncogene c-kit. C-kit was first identified as the cellular homolog of the feline sarcoma viral oncogene v-kit. This protein is a type 3 transmembrane receptor for MGF (mast cell growth factor, also known as stem cell factor). Mutations in this gene are associated with gastrointestinal stromal tumors, mast cell disease, acute myelogenous leukemia, and piebaldism. Multiple transcript variants encoding different isoforms have been found for this gene. [provided by RefSeq]
Other Designations	mast/stem cell growth factor receptor proto-oncogene tyrosine-protein kinase Kit soluble KIT variant 1

Pathway

- [Acute myeloid leukemia](#)
- [Cytokine-cytokine receptor interaction](#)
- [Endocytosis](#)
- [Hematopoietic cell lineage](#)
- [Melanogenesis](#)
- [Pathways in cancer](#)

Disease

- [Acute Disease](#)
- [Aneuploidy](#)
- [Azoospermia](#)
- [Chronic Disease](#)
- [Constipation](#)

- [Disease Progression](#)
- [Gastrointestinal Stromal Tumors](#)
- [Genetic Predisposition to Disease](#)
- [Hematologic Neoplasms](#)
- [Hyperpigmentation](#)
- [Infertility](#)
- [Leukemia](#)
- [Liver Neoplasms](#)
- [Lung Neoplasms](#)
- [Malignant melanoma](#)
- [Mastocytosis](#)
- [Melanoma](#)
- [Neoplasm](#)
- [Neoplasm Recurrence](#)
- [Neoplasm Seeding](#)
- [Oligospermia](#)
- [Osteoporosis](#)
- [Pancreatic cancer](#)
- [Pancreatic Neoplasms](#)
- [Skin Neoplasms](#)
- [Splenic Neoplasms](#)
- [Stomach Neoplasms](#)
- [Thyroid Neoplasms](#)
- [Translocation](#)