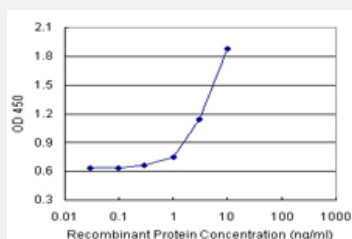


# IL15 (Human) Matched Antibody Pair

Catalog # H00003600-AP21      Size 1 Set

## Applications



Sandwich ELISA detection sensitivity ranging from 1 ng/ml to 100 ng/ml.

## Specification

<b>Product Description</b>	This antibody pair set comes with a matched antibody pair to detect and quantify the protein level of human IL15.
<b>Reactivity</b>	Human
<b>Quality Control Testing</b>	Standard curve using recombinant protein ( H00003600-P01 ) as an analyte. Sandwich ELISA detection sensitivity ranging from 1 ng/ml to 100 ng/ml.
<b>Supplied Product</b>	Antibody pair set content: 1. Capture antibody: rabbit MaxPab® affinity purified polyclonal anti-IL15 (100 ug) 2. Detection antibody: mouse polyclonal anti-IL15 (40 ul) *Reagents are sufficient for at least 3-5 x 96 well plates using recommended protocols.
<b>Storage Instruction</b>	Store reagents of the antibody pair set at -20°C or lower. Please aliquot to avoid repeated freeze thaw cycle. Reagents should be returned to -20°C storage immediately after use.

## Applications

- ELISA Pair (Recombinant protein)

[Protocol Download](#)

## Gene Info — IL15

Entrez GeneID	<a href="#">3600</a>
Gene Name	IL15
Gene Alias	IL-15, MGC9721
Gene Description	interleukin 15
Omim ID	<a href="#">600554</a>
Gene Ontology	<a href="#">Hyperlink</a>

### Gene Summary

The protein encoded by this gene is a cytokine that regulates T and natural killer cell activation and proliferation. This cytokine and interleukine 2 share many biological activities. They are found to bind common hematopoietin receptor subunits, and may compete for the same receptor, and thus negatively regulate each other's activity. The number of CD8+ memory cells is shown to be controlled by a balance between this cytokine and IL2. This cytokine induces the activation of JAK kinases, as well as the phosphorylation and activation of transcription activators STAT3, STAT5, and STAT6. Studies of the mouse counterpart suggested that this cytokine may increase the expression of apoptosis inhibitor BCL2L1/BCL-x(L), possibly through the transcription activation activity of STAT6, and thus prevent apoptosis. Two alternatively spliced transcript variants of this gene encoding the same protein have been reported. [provided by RefSeq]

Other Designations	OTTHUMP00000164617
--------------------	--------------------

## Pathway

- [Cytokine-cytokine receptor interaction](#)
- [Jak-STAT signaling pathway](#)

## Disease

- [Adenocarcinoma](#)
- [Arthritis](#)
- [Asthma](#)
- [Bronchial Hyperreactivity](#)
- [Bronchiolitis](#)
- [Carcinoma](#)

- [Cardiovascular Diseases](#)
- [Celiac Disease](#)
- [Connective Tissue Diseases](#)
- [Coronary Disease](#)
- [Diabetes Mellitus](#)
- [Edema](#)
- [Esophageal Neoplasms](#)
- [Fetal Diseases](#)
- [Fractures](#)
- [Genetic Predisposition to Disease](#)
- [Hematologic Diseases](#)
- [Hodgkin Disease](#)
- [Hypersensitivity](#)
- [Hypertrophy](#)
- [Infant](#)
- [Infection](#)
- [Inflammation](#)
- [Kidney Failure](#)
- [Lung Neoplasms](#)
- [Lymphoma](#)
- [Lymphoproliferative Disorders](#)
- [Metabolic Syndrome X](#)
- [Multiple Myeloma](#)
- [Musculoskeletal Diseases](#)
- [Neoplasm](#)
- [Obesity](#)

- [Occupational Diseases](#)
- [Osteoporosis](#)
- [Pregnancy Complications](#)
- [Premature Birth](#)
- [Psoriasis](#)
- [Pulmonary Disease](#)
- [Recurrence](#)
- [Respiratory Syncytial Virus Infections](#)
- [Skin Diseases](#)
- [Urinary Bladder Neoplasms](#)
- [Waldenstrom Macroglobulinemia](#)
- [Werner syndrome](#)