

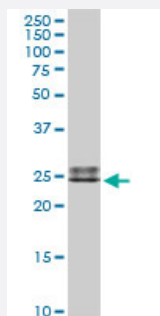
MaxPab®

# IGLL1 purified MaxPab rabbit polyclonal antibody (D01P)

Catalog # H00003543-D01P

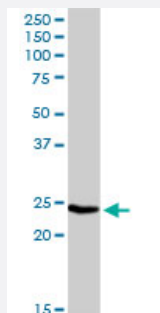
Size 100 ug

## Applications



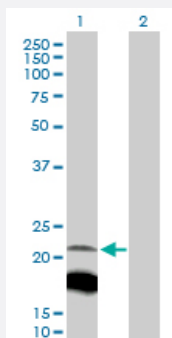
### Western Blot (Tissue lysate)

IGLL1 MaxPab rabbit polyclonal antibody. Western Blot analysis of IGLL1 expression in human spleen.



### Western Blot (Tissue lysate)

IGLL1 MaxPab rabbit polyclonal antibody. Western Blot analysis of IGLL1 expression in mouse spleen.



### Western Blot (Transfected lysate)

Western Blot analysis of IGLL1 expression in transfected 293T cell line ([H00003543-T03](#)) by IGLL1 MaxPab polyclonal antibody.

Lane 1: IGLL1 transfected lysate(23.00 KDa).

Lane 2: Non-transfected lysate.

## Specification

### Product Description

Rabbit polyclonal antibody raised against a full-length human IGLL1 protein.

|                               |  |
|-------------------------------|--|
| Immunogen                     | IGLL1 (NP_064455.1, 1 a.a. ~ 213 a.a) full-length human protein.   |
| Sequence                      | MRPGTGQGGLEAPGEPGNLRQRWPLLLLGLAVVTHGLLRPTAASQSRALGPGAPGGSSRSSL<br>RSRWGRFLLQRGSWTGPRCWPRGFQSKHNSVTHVFGSGTQLTVLSQPKATPSVTLFPPSSEEL<br>QANKATLVCLMNDFYPGILTVTWKADGTPITQGVEMTTPSKQSNNKYAASSYLSLTPEQWRSRRS<br>YSCQVMHEGSTVEKTVAPAECS |
| Host                          | Rabbit   |
| Reactivity                    | Human, Mouse   |
| Interspecies Antigen Sequence | Mouse (59); Rat (61)   |
| Quality Control Testing       | Antibody reactive against mammalian transfected lysate.  |
| Storage Buffer                | In 1x PBS, pH 7.4  |
| Storage Instruction           | Store at -20°C or lower. Aliquot to avoid repeated freezing and thawing.   |

## Applications

- Western Blot (Tissue lysate)

IGLL1 MaxPab rabbit polyclonal antibody. Western Blot analysis of IGLL1 expression in human spleen.

[Protocol Download](#)

- Western Blot (Tissue lysate)

IGLL1 MaxPab rabbit polyclonal antibody. Western Blot analysis of IGLL1 expression in mouse spleen.

[Protocol Download](#)

- Western Blot (Transfected lysate)

Western Blot analysis of IGLL1 expression in transfected 293T cell line ([H00003543-T03](#)) by IGLL1 MaxPab polyclonal antibody.

Lane 1: IGLL1 transfected lysate(23.00 KDa).

Lane 2: Non-transfected lysate.

[Protocol Download](#)

## Gene Info — IGLL1

Entrez GeneID [3543](#)

GeneBank Accession# [NM\\_020070](#)

|                    |  |
|--------------------|--|
| Protein Accession# | <a href="#">NP_064455.1</a>  |
| Gene Name          | IGLL1  |
| Gene Alias         | 14.1, CD179b, IGL1, IGL5, IGLJ14.1, IGLL, IGO, IGVPB, VPREB2   |
| Gene Description   | immunoglobulin lambda-like polypeptide 1   |
| Omim ID            | <a href="#">146770 601495</a>  |
| Gene Ontology      | <a href="#">Hyperlink</a>  |
| Gene Summary       | <p>The preB cell receptor is found on the surface of proB and preB cells, where it is involved in transduction of signals for cellular proliferation, differentiation from the proB cell to the preB cell stage, allelic exclusion at the Ig heavy chain gene locus, and promotion of Ig light chain gene rearrangements. The preB cell receptor is composed of a membrane-bound Ig mu heavy chain in association with a heterodimeric surrogate light chain. This gene encodes one of the surrogate light chain subunits and is a member of the immunoglobulin gene superfamily. This gene does not undergo rearrangement. Mutations in this gene can result in B cell deficiency and agammaglobulinemia, an autosomal recessive disease in which few or no gamma globulins or antibodies are made. Two transcript variants encoding different isoforms have been found for this gene. [provided by RefSeq]</p> |
| Other Designations | CD179b antigen Pre-B lymphocyte-specific protein-2 immunoglobulin omega polypeptide chain immunoglobulin-related 14.1 protein lambda5  |

## Pathway

- [Primary immunodeficiency](#)