

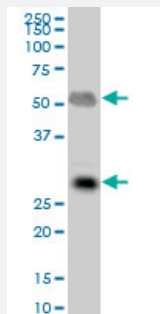
MaxPab®

IGLL1 purified MaxPab mouse polyclonal antibody (B01P)

Catalog # H00003543-B01P

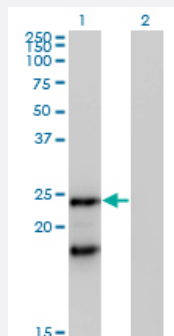
Size 50 ug

Applications



Western Blot (Tissue lysate)

IGLL1 MaxPab polyclonal antibody. Western Blot analysis of IGLL1 expression in human kidney.



Western Blot (Transfected lysate)

Western Blot analysis of IGLL1 expression in transfected 293T cell line ([H00003543-T01](#)) by IGLL1 MaxPab polyclonal antibody.

Lane 1: IGLL1 transfected lysate(23.54 KDa).

Lane 2: Non-transfected lysate.

Specification

Product Description	Mouse polyclonal antibody raised against a full-length human IGLL1 protein.
Immunogen	IGLL1 (AAH12293, 1 a.a. ~ 213 a.a) full-length human protein.
Sequence	MRPGTGQGGLEAPGEPGNLRQRWPLLLLGLAVVTHGLLRPTAASQSRALGPGAPGGSSRSSL RSRWGRFLLQRGSWTGPRCWPRGFQSKHNSVTHVFGSGTQLTVLSQPKATPSVTLFPPSSEEL QANKATLVCLMNDFYPGILVTWKADGTPITQGVEMTTPSKQSNNKYAASSYLSLTPEQWRSRRS YSCQVMHEGSTVEKTVAPAECS
Host	Mouse
Reactivity	Human

Interspecies Antigen Sequence	Mouse (59); Rat (61)
Quality Control Testing	Antibody reactive against mammalian transfected lysate.
Storage Buffer	In 1x PBS, pH 7.4
Storage Instruction	Store at -20°C or lower. Aliquot to avoid repeated freezing and thawing.

Applications

- Western Blot (Tissue lysate)

IGLL1 MaxPab polyclonal antibody. Western Blot analysis of IGLL1 expression in human kidney.

[Protocol Download](#)

- Western Blot (Transfected lysate)

Western Blot analysis of IGLL1 expression in transfected 293T cell line ([H00003543-T01](#)) by IGLL1 MaxPab polyclonal antibody.

Lane 1: IGLL1 transfected lysate(23.54 KDa).

Lane 2: Non-transfected lysate.

[Protocol Download](#)

Gene Info — IGLL1

Entrez GeneID	3543
GeneBank Accession#	BC012293
Protein Accession#	AAH12293
Gene Name	IGLL1
Gene Alias	14.1, CD179b, IGL1, IGL5, IGLJ14.1, IGLL, IGO, IGVPB, VPBEB2
Gene Description	immunoglobulin lambda-like polypeptide 1
Omim ID	146770 601495
Gene Ontology	Hyperlink

Gene Summary

The preB cell receptor is found on the surface of proB and preB cells, where it is involved in transduction of signals for cellular proliferation, differentiation from the proB cell to the preB cell stage, allelic exclusion at the Ig heavy chain gene locus, and promotion of Ig light chain gene rearrangements. The preB cell receptor is composed of a membrane-bound Ig mu heavy chain in association with a heterodimeric surrogate light chain. This gene encodes one of the surrogate light chain subunits and is a member of the immunoglobulin gene superfamily. This gene does not undergo rearrangement. Mutations in this gene can result in B cell deficiency and agammaglobulinemia, an autosomal recessive disease in which few or no gamma globulins or antibodies are made. Two transcript variants encoding different isoforms have been found for this gene. [provided by RefSeq]

Other Designations

CD179b antigen|Pre-B lymphocyte-specific protein-2|immunoglobulin omega polypeptide chain|immunoglobulin-related 14.1 protein|lambda5

Pathway

- [Primary immunodeficiency](#)