

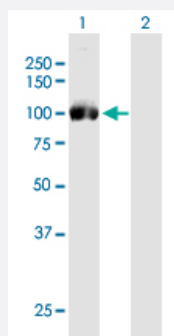
CX Grade

# IFI16 monoclonal antibody (M03J), clone 2E3

Catalog # H00003428-M03J

Size 50 ug

## Applications

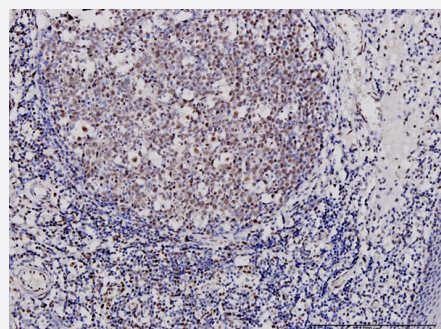


### Western Blot (Transfected lysate)

Western Blot analysis of IFI16 expression in transfected 293T cell line by IFI16 monoclonal antibody (M03J), clone 2E3.

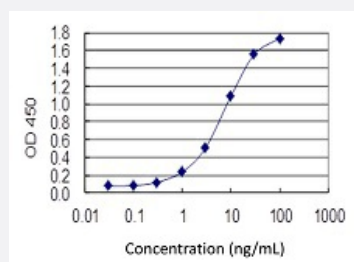
Lane 1: IFI16 transfected lysate (Predicted MW: 82 KDa).

Lane 2: Non-transfected lysate.



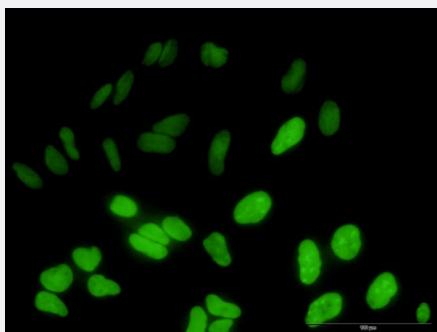
### Immunohistochemistry (Formalin/PFA-fixed paraffin-embedded sections)

Immunoperoxidase of monoclonal antibody to IFI16 on formalin-fixed paraffin-embedded human tonsil. [antibody concentration 3 ug/ml]



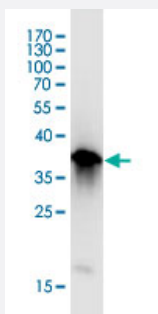
### Sandwich ELISA (Recombinant protein)

Detection limit for recombinant GST tagged IFI16 is 0.1 ng/ml as a capture antibody.



## Immunofluorescence

Immunofluorescence of monoclonal antibody to IFI16 on HeLa cell . [antibody concentration 10 ug/ml]



Western Blot detection against Immunogen (36.74 KDa) .

## Specification

<b>Product Description</b>	Mouse monoclonal antibody raised against a partial recombinant IFI16. This product is belong to Cell Culture Grade Antibody (CX Grade).
<b>Immunogen</b>	IFI16 (AAH17059, 630 a.a. ~ 729 a.a) partial recombinant protein with GST tag. MW of the GST tag alone is 26 KDa.
<b>Sequence</b>	FVNGVFEVHKKNVARGEFTYYEIQDNTGKMEVVVHGRLTTINCEE GDKLKLTCFELAPKSGNTGEL RSVIHSHIKVIKTRKNKKDILNPDSSMETSPDFFF
<b>Host</b>	Mouse
<b>Reactivity</b>	Human
<b>Interspecies Antigen Sequence</b>	Rat (43)
<b>Preparation Method</b>	Cell Culture Production
<b>Isotype</b>	IgG2b Kappa
<b>Quality Control Testing</b>	Antibody Reactive Against Recombinant Protein. Western Blot detection against Immunogen (36.74 KDa) .
<b>Storage Buffer</b>	In 1x PBS, pH 7.4
<b>Storage Instruction</b>	Store at -20°C or lower. Aliquot to avoid repeated freezing and thawing.

## Applications

- Western Blot (Transfected lysate)

Western Blot analysis of IFI16 expression in transfected 293T cell line by IFI16 monoclonal antibody (M03J), clone 2E3.

Lane 1: IFI16 transfected lysate (Predicted MW: 82 KDa).

Lane 2: Non-transfected lysate.

[Protocol Download](#)

- Western Blot (Recombinant protein)

[Protocol Download](#)

- Immunohistochemistry (Formalin/PFA-fixed paraffin-embedded sections)

Immunoperoxidase of monoclonal antibody to IFI16 on formalin-fixed paraffin-embedded human tonsil. [antibody concentration 3 ug/ml]

[Protocol Download](#)

- Sandwich ELISA (Recombinant protein)

Detection limit for recombinant GST tagged IFI16 is 0.1 ng/ml as a capture antibody.

[Protocol Download](#)

- ELISA

- Immunofluorescence

Immunofluorescence of monoclonal antibody to IFI16 on HeLa cell . [antibody concentration 10 ug/ml]

## Gene Info — IFI16

Entrez GeneID	<a href="#">3428</a>
GeneBank Accession#	<a href="#">BC017059</a>
Protein Accession#	<a href="#">AAH17059</a>
Gene Name	IFI16
Gene Alias	IFNGIP1, MGC9466, PYHIN2
Gene Description	interferon, gamma-inducible protein 16

Omim ID [147586](#)

Gene Ontology [Hyperlink](#)

**Gene Summary** This gene encodes a member of the HIN-200 (hematopoietic interferon-inducible nuclear antigen s with 200 amino acid repeats) family of cytokines. The encoded protein contains domains involv ed in DNA binding, transcriptional regulation, and protein-protein interactions. The protein localize s to the nucleoplasm and nucleoli, and interacts with p53 and retinoblastoma-1. It modulates p53 f unction, and inhibits cell growth in the Ras/Raf signaling pathway. [provided by RefSeq

**Other Designations** OTTHUMP00000035192|interferon-gamma induced protein IFI 16|interferon-inducible myeloid dif ferentiation transcriptional activator

## Disease

- [Genetic Predisposition to Disease](#)
- [Lupus Erythematosus](#)
- [Ovarian Neoplasms](#)
- [Tobacco Use Disorder](#)