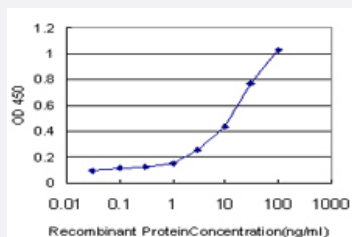


HOXC12 monoclonal antibody (M03), clone 2E9

Catalog # H00003228-M03

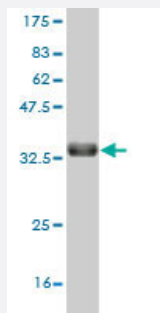
Size 100 ug

Applications



Sandwich ELISA (Recombinant protein)

Detection limit for recombinant GST tagged HOXC12 is approximately 0.03ng/ml as a capture antibody.



Western Blot detection against Immunogen (36.74 KDa) .

Specification

Product Description	Mouse monoclonal antibody raised against a partial recombinant HOXC12.
Immunogen	HOXC12 (NP_776272, 1 a.a. ~ 100 a.a) partial recombinant protein with GST tag. MW of the GST tag alone is 26 KDa.
Sequence	MGEHNLLNPGFVGPLVNIHTGDTFYFPNFRASGAQLPGLPSLSYPRRDNVCSLSWPSAEP CNGY P QPYLGSPVSLNPPFGRTCELRVEDGKGYREPCA
Host	Mouse
Reactivity	Human

Interspecies Antigen Sequence	Mouse (98); Rat (98)
Isotype	IgG2b Kappa
Quality Control Testing	Antibody Reactive Against Recombinant Protein. Western Blot detection against Immunogen (36.74 KDa) .
Storage Buffer	In 1x PBS, pH 7.4
Storage Instruction	Store at -20°C or lower. Aliquot to avoid repeated freezing and thawing.

Applications

- Western Blot (Recombinant protein)

[Protocol Download](#)

- Sandwich ELISA (Recombinant protein)

Detection limit for recombinant GST tagged HOXC12 is approximately 0.03ng/ml as a capture antibody.

[Protocol Download](#)

- ELISA

Gene Info — HOXC12

Entrez GeneID	3228
GeneBank Accession#	NM_173860
Protein Accession#	NP_776272
Gene Name	HOXC12
Gene Alias	HOC3F, HOX3, HOX3F
Gene Description	homeobox C12
Omim ID	142975
Gene Ontology	Hyperlink

Gene Summary

This gene belongs to the homeobox family of genes. The homeobox genes encode a highly conserved family of transcription factors that play an important role in morphogenesis in all multicellular organisms. Mammals possess four similar homeobox gene clusters, HOXA, HOXB, HOXC and HOXD, which are located on different chromosomes and consist of 9 to 11 genes arranged in tandem. This gene is one of several homeobox HOXC genes located in a cluster on chromosome 12. [provided by RefSeq]

Other Designations

homeobox 3F|homeobox C12