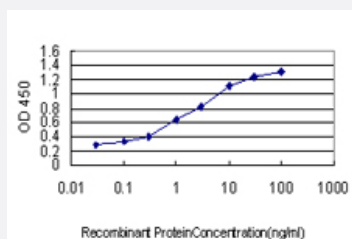


HOXC10 monoclonal antibody (M01), clone 3F2

Catalog # H00003226-M01

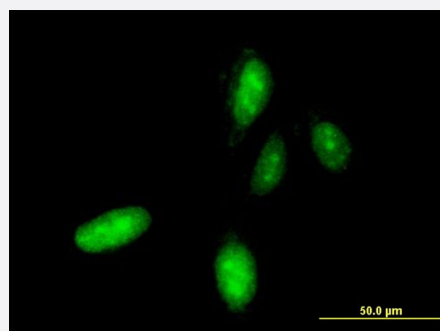
Size 100 ug

Applications



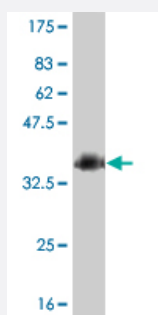
Sandwich ELISA (Recombinant protein)

Detection limit for recombinant GST tagged HOXC10 is approximately 0.03ng/ml as a capture antibody.



Immunofluorescence

Immunofluorescence of monoclonal antibody to HOXC10 on HeLa cell .
[antibody concentration 10 ug/ml]



Western Blot detection against Immunogen (36.63 KDa) .

Specification

Product Description

Mouse monoclonal antibody raised against a partial recombinant HOXC10.

Immunogen	HOXC10 (AAH01293, 158 a.a. ~ 257 a.a) partial recombinant protein with GST tag. MW of the GST tag alone is 26 KDa.
Sequence	LDKTPHCSGANDFEAPFEQRASLNPRAEHLESPQLGGKVSFPETPKSDSQTPSPNEIKTEQSLA GPKGSPSESEKERAKAADSSPDTSDNEAKEEIKAEEN
Host	Mouse
Reactivity	Human
Interspecies Antigen Sequence	Mouse (95)
Isotype	IgG2a Kappa
Quality Control Testing	Antibody Reactive Against Recombinant Protein. Western Blot detection against Immunogen (36.63 KDa) .
Storage Buffer	In 1x PBS, pH 7.4
Storage Instruction	Store at -20°C or lower. Aliquot to avoid repeated freezing and thawing.

Applications

- Western Blot (Recombinant protein)

[Protocol Download](#)

- Sandwich ELISA (Recombinant protein)

Detection limit for recombinant GST tagged HOXC10 is approximately 0.03ng/ml as a capture antibody.

[Protocol Download](#)

- ELISA

- Immunofluorescence

Immunofluorescence of monoclonal antibody to HOXC10 on HeLa cell . [antibody concentration 10 ug/ml]

Gene Info — HOXC10

Entrez GeneID [3226](#)

GeneBank Accession# [BC001293](#)

Protein Accession#	AAH01293
Gene Name	HOXC10
Gene Alias	HOX3l, MGC5259
Gene Description	homeobox C10
Omim ID	605560
Gene Ontology	Hyperlink
Gene Summary	<p>This gene belongs to the homeobox family of genes. The homeobox genes encode a highly conserved family of transcription factors that play an important role in morphogenesis in all multicellular organisms. Mammals possess four similar homeobox gene clusters, HOXA, HOXB, HOXC and HOXD, which are located on different chromosomes and consist of 9 to 11 genes arranged in tandem. This gene is one of several homeobox HOXC genes located in a cluster on chromosome 12. The protein level is controlled during cell differentiation and proliferation, which may indicate this protein has a role in origin activation. [provided by RefSeq]</p>
Other Designations	homeobox C10 homeobox protein Hox-C10 homeoprotein C10