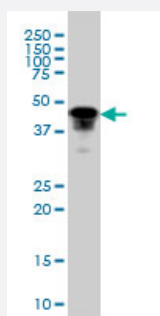


# FOXA1 monoclonal antibody (M01), clone 2D7

Catalog # H00003169-M01

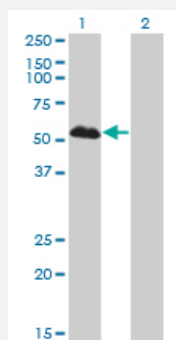
Size 100 ug

## Applications



### Western Blot (Cell lysate)

FOXA1 monoclonal antibody (M01), clone 2D7. Western Blot analysis of FOXA1 expression in HepG2 ( Cat # L019V1 ).

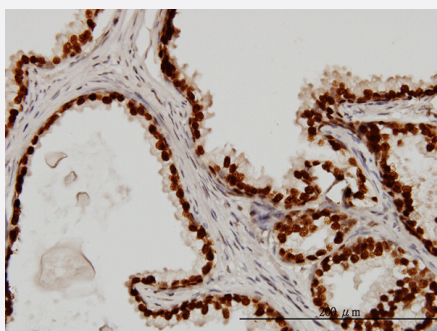


### Western Blot (Transfected lysate)

Western Blot analysis of FOXA1 expression in transfected 293T cell line by FOXA1 monoclonal antibody (M01), clone 2D7.

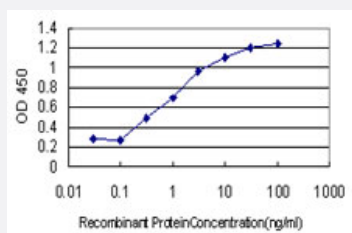
Lane 1: FOXA1 transfected lysate(49.1 KDa).

Lane 2: Non-transfected lysate.



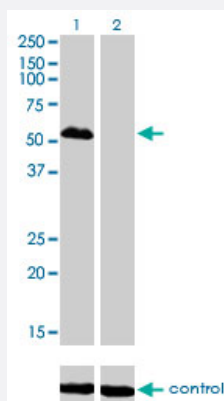
### Immunohistochemistry (Formalin/PFA-fixed paraffin-embedded sections)

Immunoperoxidase of monoclonal antibody to FOXA1 on formalin-fixed paraffin-embedded human prostate. [antibody concentration 3 ug/ml]



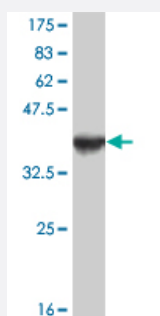
### Sandwich ELISA (Recombinant protein)

Detection limit for recombinant GST tagged FOXA1 is approximately 0.03ng/ml as a capture antibody.



## RNAi Knockdown (Antibody validated)

Western blot analysis of FOXA1 over-expressed 293 cell line, cotransfected with FOXA1 Validated Chimera RNAi ( Cat # H00003169-R01V ) (Lane 2) or non-transfected control (Lane 1). Blot probed with FOXA1 monoclonal antibody (M01), clone 2D7 (Cat # H00003169-M01 ). GAPDH ( 36.1 kDa ) used as specificity and loading control.



Western Blot detection against Immunogen (37.4 KDa) .

## Specification

<b>Product Description</b>	Mouse monoclonal antibody raised against a partial recombinant FOXA1.
<b>Immunogen</b>	FOXA1 (NP_004487, 367 a.a. ~ 472 a.a) partial recombinant protein with GST tag. MW of the GST tag alone is 26 KDa.
<b>Sequence</b>	LASVPASHPAHGLAPHESQLHLKGDPHYSFNHPFSINNLMSSSEQQHKLDFKAYEQALQYSPYG STLPASLPLGSASVTTRSPIEPSALEPAYQGVYSRPVLNTS
<b>Host</b>	Mouse
<b>Reactivity</b>	Human
<b>Isotype</b>	IgG2a Kappa
<b>Quality Control Testing</b>	Antibody Reactive Against Recombinant Protein. Western Blot detection against Immunogen (37.4 KDa) .
<b>Storage Buffer</b>	In 1x PBS, pH 7.4
<b>Storage Instruction</b>	Store at -20°C or lower. Aliquot to avoid repeated freezing and thawing.

## Applications

- Western Blot (Cell lysate)

FOXA1 monoclonal antibody (M01), clone 2D7. Western Blot analysis of FOXA1 expression in HepG2 ( Cat # L019V1 ).

[Protocol Download](#)

- Western Blot (Transfected lysate)

Western Blot analysis of FOXA1 expression in transfected 293T cell line by FOXA1 monoclonal antibody (M01), clone 2D7.

Lane 1: FOXA1 transfected lysate(49.1 KDa).

Lane 2: Non-transfected lysate.

[Protocol Download](#)

- Western Blot (Recombinant protein)

[Protocol Download](#)

- Immunohistochemistry (Formalin/PFA-fixed paraffin-embedded sections)

Immunoperoxidase of monoclonal antibody to FOXA1 on formalin-fixed paraffin-embedded human prostate. [antibody concentration 3 ug/ml]

[Protocol Download](#)

- Sandwich ELISA (Recombinant protein)

Detection limit for recombinant GST tagged FOXA1 is approximately 0.03ng/ml as a capture antibody.

[Protocol Download](#)

- ELISA

- RNAi Knockdown (Antibody validated)

Western blot analysis of FOXA1 over-expressed 293 cell line, cotransfected with FOXA1 Validated Chimera RNAi ( Cat # H00003169-R01V ) (Lane 2) or non-transfected control (Lane 1). Blot probed with FOXA1 monoclonal antibody (M01), clone 2D7 (Cat # H00003169-M01 ). GAPDH ( 36.1 kDa ) used as specificity and loading control.

[Protocol Download](#)

## Gene Info — FOXA1

Entrez GeneID

[3169](#)

GeneBank Accession#	<a href="#">NM_004496</a>
Protein Accession#	<a href="#">NP_004487</a>
Gene Name	FOXA1
Gene Alias	HNF3A, MGC33105, TCF3A
Gene Description	forkhead box A1
Omim ID	<a href="#">602294</a>
Gene Ontology	<a href="#">Hyperlink</a>
Gene Summary	This gene encodes a member of the forkhead class of DNA-binding proteins. These hepatocyte nuclear factors are transcriptional activators for liver-specific transcripts such as albumin and transthyretin, and they also interact with chromatin. Similar family members in mice have roles in the regulation of metabolism and in the differentiation of the pancreas and liver. [provided by RefSeq]
Other Designations	hepatocyte nuclear factor 3, alpha

## Publication Reference

- [Intrinsic breast cancer subtypes defined by estrogen receptor signalling-prognostic relevance of progesterone receptor loss.](#)

Braun L, Mietzsch F, Seibold P, Schneeweiss A, Schirmacher P, Chang-Claude J, Peter Sinn H, Aulmann S.

Modern Pathology 2013 Sep; 26(9):1161.

Application: IHC-P, Human, breast Carcinoma

- [A simple immunohistochemical panel comprising 2 conventional markers, Ki67 and p53, is a powerful tool for predicting patient outcome in luminal-type breast cancer.](#)

Kobayashi T, Iwaya K, Moriya T, Yamasaki T, Tsuda H, Yamamoto J, Matsubara O.

BMC Clinical Pathology 2013 Feb; 13(5).

Application: IHC, Human, Human colon cancer tissue

- [Association of GATA3, P53, Ki67 status and vascular peritumoral invasion are strongly prognostic in luminal breast cancer.](#)

Jacquemier J, Charafe-Jauffret E, Monville F, Esterni B, Extra JM, Houvenaeghel G, Xerri L, Bertucci F, Birnbaum D.

Breast Cancer Research 2009 Apr; 11(2):R23.

Application: IHC, Human, Breast

- [Estrogen induces repression of the breast cancer and salivary gland expression gene in an estrogen receptor alpha-dependent manner.](#)

Bretschneider N, Brand H, Miller N, Lowery AJ, Kerin MJ, Gannon F, Denger S.

Cancer Research 2008 Jan; 68(1):106.

Application: Func, WB, Human, MCF-7 cells

## Disease

- [Breast cancer](#)
- [Breast Neoplasms](#)