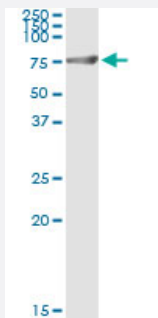


GPI (Human) IP-WB Antibody Pair

Catalog # H00002821-PW1

Size 1 Set

Applications



Immunoprecipitation of GPI transfected lysate using rabbit polyclonal anti-GPI and Protein A Magnetic Bead ([U0007](#)), and immunoblotted with mouse purified polyclonal anti-GPI.

Specification

Product Description	This IP-WB antibody pair set comes with one antibody for immunoprecipitation and another to detect the precipitated protein in western blot.
Reactivity	Human
Quality Control Testing	Immunoprecipitation-Western Blot (IP-WB) Immunoprecipitation of GPI transfected lysate using rabbit polyclonal anti-GPI and Protein A Magnetic Bead (U0007), and immunoblotted with mouse purified polyclonal anti-GPI.
Supplied Product	Antibody pair set content: 1. Antibody pair for IP: rabbit polyclonal anti-GPI (300 ul) 2. Antibody pair for WB: mouse purified polyclonal anti-GPI (50 ug)
Storage Instruction	Store reagents of the antibody pair set at -20°C or lower. Please aliquot to avoid repeated freeze thaw cycle. Reagents should be returned to -20°C storage immediately after use.

Applications

- Immunoprecipitation-Western Blot

[Protocol Download](#)

Gene Info — GPI

Entrez GeneID [2821](#)

Gene Name GPI

Gene Alias AMF, GNPI, NLK, PGI, PHI, SA-36

Gene Description glucose phosphate isomerase

Omim ID [172400](#)

Gene Ontology [Hyperlink](#)

Gene Summary This gene belongs to the GPI family whose members encode multifunctional phosphoglucose isomerase proteins involved in energy pathways. The protein encoded by this gene is a dimeric enzyme that catalyzes the reversible isomerization of glucose-6-phosphate and fructose-6-phosphate. The protein functions in different capacities inside and outside the cell. In the cytoplasm, the gene product is involved in glycolysis and gluconeogenesis, while outside the cell it functions as a neurotrophic factor for spinal and sensory neurons. Defects in this gene are the cause of nonspherocytic hemolytic anemia and a severe enzyme deficiency can be associated with hydrops fetalis, immediate neonatal death and neurological impairment. [provided by RefSeq]

Other Designations autocrine motility factor|glucose-6-phosphate isomerase|hexose monophosphate isomerase|hexosephosphate isomerase|neuroleukin|oxoisomerase|phosphoglucose isomerase|phosphohexomutase|phosphohexose isomerase|phosphosaccharomutase|sperm antigen-36

Pathway

- [Amino sugar and nucleotide sugar metabolism](#)
- [Biosynthesis of alkaloids derived from histidine and purine](#)
- [Biosynthesis of alkaloids derived from ornithine](#)
- [Biosynthesis of alkaloids derived from shikimate pathway](#)
- [Biosynthesis of alkaloids derived from terpenoid and polyketide](#)
- [Biosynthesis of phenylpropanoids](#)
- [Biosynthesis of plant hormones](#)
- [Biosynthesis of terpenoids and steroids](#)
- [Glycolysis / Gluconeogenesis](#)
- [Metabolic pathways](#)

- [Pentose phosphate pathway](#)
- [Starch and sucrose metabolism](#)