

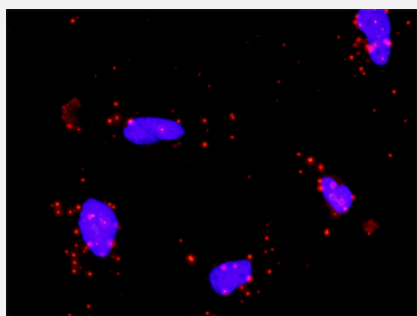
CX Grade

GLI1 monoclonal antibody (M01J), clone 1F12

Catalog # H00002735-M01J

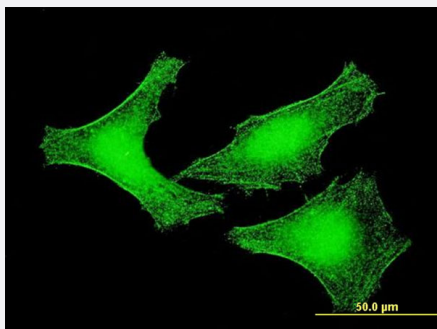
Size 100 ug

Applications



In situ Proximity Ligation Assay (Cell)

Proximity Ligation Analysis of protein-protein interactions between SUFU and GLI1. HeLa cells were stained with anti-SUFU rabbit purified polyclonal 1:1200 and anti-GLI1 mouse monoclonal antibody 1:50. Each red dot represents the detection of protein-protein interaction complex, and nuclei were counterstained with DAPI (blue).



Immunofluorescence

Immunofluorescence of monoclonal antibody to GLI1 on HeLa cell . [antibody concentration 10 ug/ml]

Specification

Product Description

Mouse monoclonal antibody raised against a partial recombinant GLI1. This product is belong to Cell Culture Grade Antibody (CX Grade).

Immunogen

GLI1 (AAH13000, 401 a.a. ~ 500 a.a) partial recombinant protein with GST tag. MW of the GST tag alone is 26 KDa.

Sequence

GPLPRAPSISTVEPKREREGGPIREESRLTVEGAMKQPSPGAQSSCSSDHSPAGSAANTDSG
VEMTGNAGGSTEDLSSLDEGPCIAGTGLSTLRRLN

Host

Mouse

Reactivity

Human

Interspecies Antigen Sequence	Mouse (88); Rat (89)
Preparation Method	Cell Culture Production
Isotype	IgG2a Kappa
Quality Control Testing	Antibody Reactive Against Recombinant Protein.
Storage Buffer	In 1x PBS, pH 7.4
Storage Instruction	Store at -20°C or lower. Aliquot to avoid repeated freezing and thawing.

Applications

- ELISA

- *In situ* Proximity Ligation Assay (Cell)

Proximity Ligation Analysis of protein-protein interactions between SUFU and GLI1. HeLa cells were stained with anti-SUFU rabbit purified polyclonal 1:1200 and anti-GLI1 mouse monoclonal antibody 1:50. Each red dot represents the detection of protein-protein interaction complex, and nuclei were counterstained with DAPI (blue).

- Immunofluorescence

Immunofluorescence of monoclonal antibody to GLI1 on HeLa cell . [antibody concentration 10 ug/ml]

Gene Info — GLI1

Entrez GeneID	2735
GeneBank Accession#	BC013000
Protein Accession#	AAH13000
Gene Name	GLI1
Gene Alias	GLI
Gene Description	glioma-associated oncogene homolog 1 (zinc finger protein)
Omim ID	165220
Gene Ontology	Hyperlink

Gene Summary

This gene encodes a member of the Kruppel family of zinc finger proteins. The encoded transcript ion factor is activated by the sonic hedgehog signal transduction cascade and regulates stem cell proliferation. The activity and nuclear localization of this protein is negatively regulated by p53 in a n inhibitory loop. Multiple transcript variants encoding different isoforms have been found for this g ene. [provided by RefSeq

Other Designations

glioma-associated oncogene homolog (zinc finger protein)|glioma-associated oncogene homolo
g 1

Pathway

- [Basal cell carcinoma](#)
- [Hedgehog signaling pathway](#)
- [Pathways in cancer](#)

Disease

- [Carcinoma](#)
- [Genetic Predisposition to Disease](#)
- [Heart Septal Defects](#)
- [Inflammation](#)
- [Inflammatory Bowel Diseases](#)
- [Kidney Failure](#)
- [Skin Neoplasms](#)