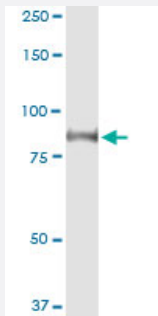


GLB1 (Human) IP-WB Antibody Pair

Catalog # H00002720-PW2

Size 1 Set

Applications



Immunoprecipitation of GLB1 transfected lysate using rabbit polyclonal anti-GLB1 and Protein A Magnetic Bead ([U0007](#)), and immunoblotted with mouse purified polyclonal anti-GLB1.

Specification

Product Description	This IP-WB antibody pair set comes with one antibody for immunoprecipitation and another to detect the precipitated protein in western blot.
Reactivity	Human
Quality Control Testing	Immunoprecipitation-Western Blot (IP-WB) Immunoprecipitation of GLB1 transfected lysate using rabbit polyclonal anti-GLB1 and Protein A Magnetic Bead (U0007), and immunoblotted with mouse purified polyclonal anti-GLB1.
Supplied Product	Antibody pair set content: 1. Antibody pair for IP: rabbit polyclonal anti-GLB1 (300 ul) 2. Antibody pair for WB: mouse purified polyclonal anti-GLB1 (50 ug)
Storage Instruction	Store reagents of the antibody pair set at -20°C or lower. Please aliquot to avoid repeated freeze thaw cycle. Reagents should be returned to -20°C storage immediately after use.

Applications

- Immunoprecipitation-Western Blot

[Protocol Download](#)

Gene Info — GLB1

Entrez GeneID	2720
Gene Name	GLB1
Gene Alias	EBP, ELNR1
Gene Description	galactosidase, beta 1
Omim ID	230500 611458
Gene Ontology	Hyperlink
Gene Summary	This gene encodes beta-galactosidase-1, a lysosomal enzyme that hydrolyzes the terminal beta-galactose from ganglioside substrates and other glycoconjugates. Defects in this gene are the cause of GM1-gangliosidosis and Morquio B syndrome. Multiple transcript variants encoding different isoforms have been found for this gene. [provided by RefSeq]
Other Designations	elastin receptor 1, 67kDa

Pathway

- [Galactose metabolism](#)
- [Glycosaminoglycan degradation](#)
- [Glycosphingolipid biosynthesis - ganglio series](#)
- [Lysosome](#)
- [Metabolic pathways](#)
- [Other glycan degradation](#)
- [Sphingolipid metabolism](#)

Disease

- [Tobacco Use Disorder](#)