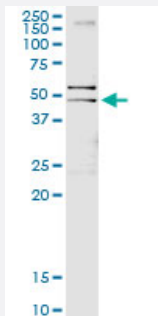


GFAP (Human) IP-WB Antibody Pair

Catalog # H00002670-PW3

Size 1 Set

Applications



Immunoprecipitation of GFAP transfected lysate using rabbit polyclonal anti-GFAP and Protein A Magnetic Bead ([U0007](#)), and immunoblotted with mouse purified polyclonal anti-GFAP.

Specification

Product Description	This IP-WB antibody pair set comes with one antibody for immunoprecipitation and another to detect the precipitated protein in western blot.
Reactivity	Human
Quality Control Testing	Immunoprecipitation-Western Blot (IP-WB) Immunoprecipitation of GFAP transfected lysate using rabbit polyclonal anti-GFAP and Protein A Magnetic Bead (U0007), and immunoblotted with mouse purified polyclonal anti-GFAP.
Supplied Product	Antibody pair set content: 1. Antibody pair for IP: rabbit polyclonal anti-GFAP (300 ul) 2. Antibody pair for WB: mouse purified polyclonal anti-GFAP (50 ug)
Storage Instruction	Store reagents of the antibody pair set at -20°C or lower. Please aliquot to avoid repeated freeze thaw cycle. Reagents should be returned to -20°C storage immediately after use.

Applications

- Immunoprecipitation-Western Blot

[Protocol Download](#)

Gene Info — GFAP

Entrez GeneID	2670
Gene Name	GFAP
Gene Alias	FLJ45472
Gene Description	glial fibrillary acidic protein
Omim ID	137780 203450
Gene Ontology	Hyperlink
Gene Summary	This gene encodes one of the major intermediate filament proteins of mature astrocytes. It is used as a marker to distinguish astrocytes from other glial cells during development. Mutations in this gene cause Alexander disease, a rare disorder of astrocytes in the central nervous system. Alternative splicing results in multiple transcript variants encoding distinct isoforms. [provided by RefSeq]
Other Designations	-

Disease

- [Alzheimer disease](#)
- [Cognition](#)