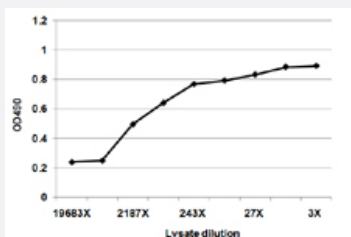


GFAP (Human) Matched Antibody Pair

Catalog # H00002670-AP53

Size 1 Set

Applications



Sandwich ELISA detection sensitivity ranging from approximately 6561x to 3x dilution of the GFAP 293T overexpression lysate (non-denatured).

Specification

Product Description

This antibody pair set comes with a matched antibody pair to detect and quantify the protein level of human GFAP.

Reactivity

Human

Quality Control Testing

Standard curve using GFAP 293T overexpression lysate (non-denatured) as an analyte. Sandwich ELISA detection sensitivity ranging from approximately 6561x to 3x dilution of the GFAP 293T overexpression lysate (non-denatured).

Supplied Product

Antibody pair set content:

1. Capture antibody: mouse monoclonal anti-GFAP, IgG2b Kappa (100 ug)
2. Detection antibody: biotinylated rabbit MaxPab® purified polyclonal anti-GFAP (100 ug)

*Reagents are sufficient for at least 3-5 x 96 well plates using recommended protocols.

Storage Instruction

Store reagents of the antibody pair set at -20°C or lower. Please aliquot to avoid repeated freeze thaw cycle. Reagents should be returned to -20°C storage immediately after use.

Applications

- ELISA Pair (Transfected lysate)

[Protocol Download](#)

Gene Info — GFAP

Entrez GeneID [2670](#)**Gene Name** GFAP**Gene Alias** FLJ45472**Gene Description** glial fibrillary acidic protein**Omim ID** [137780 203450](#)**Gene Ontology** [Hyperlink](#)

Gene Summary This gene encodes one of the major intermediate filament proteins of mature astrocytes. It is used as a marker to distinguish astrocytes from other glial cells during development. Mutations in this gene cause Alexander disease, a rare disorder of astrocytes in the central nervous system. Alternative splicing results in multiple transcript variants encoding distinct isoforms. [provided by RefSeq]

Other Designations -

Disease

- [Alzheimer disease](#)
- [Cognition](#)