

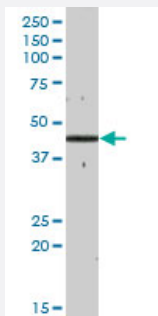
MaxPab®

GCDH MaxPab mouse polyclonal antibody (B01)

Catalog # H00002639-B01

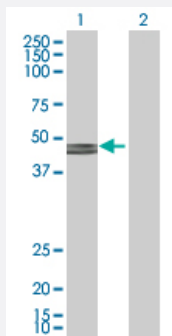
Size 50 uL

Applications



Western Blot (Tissue lysate)

GCDH MaxPab polyclonal antibody. Western Blot analysis of GCDH expression in human liver.

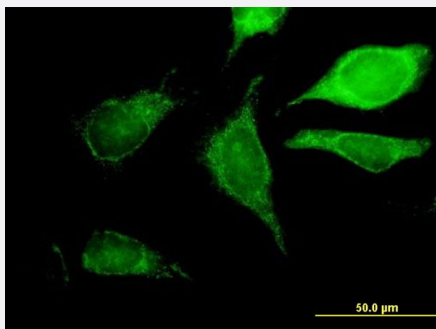


Western Blot (Transfected lysate)

Western Blot analysis of GCDH expression in transfected 293T cell line ([H00002639-T01](#)) by GCDH MaxPab polyclonal antibody.

Lane 1: GCDH transfected lysate(48.18 KDa).

Lane 2: Non-transfected lysate.



Immunofluorescence

Immunofluorescence of purified MaxPab antibody to GCDH on HeLa cell. [antibody concentration 10 ug/ml]

Specification

Product Description

Mouse polyclonal antibody raised against a full-length human GCDH protein.

Immunogen	GCDH (NP_000150.1, 1 a.a. ~ 438 a.a) full-length human protein.
Sequence	MALRGVSVRLLSRGPGLHVLRTWWSSAAQTEKGGRTQSQLAKSSRPEFDWQDPLVLEEQLTTD EILIRDTFRTYCQERLMPRILLANRNEVFHREIISEMGELGVLGPTIKGYGCAGVSSVAYGLLARELE RVDSGYRSAMSVQSSLVMHPYAYGSEEQRQKYLPLAKGELLGCFGLTEPNSGSDPSSMETRA HYNSSNKSYSYLTNGTKTWITNSPMADLFVWWARCEGDCIRGFLLEKGMGRGLSAPRIQKGFSLRASA TGMIMDGVPEENVLPGASSLGGPFGCLNNARYGIAWGVLGASEFCLHTARQYALDRMQFGV PLARNQLIQKKLADMLTEITLGLHACLQLGRLKDQDKAAPEMVSLKRNKCGKALDIARQARDML GGNGISDEYHVIRHAMNLEAVNTYEGTHDIHALILGRAITGIQAF TASK
Host	Mouse
Reactivity	Human
Quality Control Testing	Antibody reactive against mammalian transfected lysate.
Storage Buffer	No additive
Storage Instruction	Store at -20°C or lower. Aliquot to avoid repeated freezing and thawing.
Note	For IHC and IF applications, antibody purification with Protein A will be needed prior to use.

Applications

- Western Blot (Tissue lysate)

GCDH MaxPab polyclonal antibody. Western Blot analysis of GCDH expression in human liver.

[Protocol Download](#)

- Western Blot (Transfected lysate)

Western Blot analysis of GCDH expression in transfected 293T cell line ([H00002639-T01](#)) by GCDH MaxPab polyclonal antibody.

Lane 1: GCDH transfected lysate(48.18 KDa).

Lane 2: Non-transfected lysate.

[Protocol Download](#)

- Immunofluorescence

Immunofluorescence of purified MaxPab antibody to GCDH on HeLa cell. [antibody concentration 10 ug/ml]

Gene Info — GCDH

Entrez GeneID [2639](#)

GeneBank Accession#	NM_000159.2
Protein Accession#	NP_000150.1
Gene Name	GCDH
Gene Alias	ACAD5, GCD
Gene Description	glutaryl-Coenzyme A dehydrogenase
Omim ID	231670 608801
Gene Ontology	Hyperlink
Gene Summary	<p>The protein encoded by this gene belongs to the acyl-CoA dehydrogenase family. It catalyzes the oxidative decarboxylation of glutaryl-CoA to crotonyl-CoA and CO(2) in the degradative pathway of L-lysine, L-hydroxylysine, and L-tryptophan metabolism. It uses electron transfer flavoprotein as its electron acceptor. The enzyme exists in the mitochondrial matrix as a homotetramer of 45-kD subunits. Alternatively spliced transcript variants encoding different isoforms have been identified. [provided by RefSeq</p>
Other Designations	glutaryl-CoA dehydrogenase, mitochondrial

Pathway

- [Benzoate degradation via CoA ligation](#)
- [Fatty acid metabolism](#)
- [Lysine degradation](#)
- [Metabolic pathways](#)
- [Tryptophan metabolism](#)

Disease

- [Cardiovascular Diseases](#)
- [Diabetes Mellitus](#)
- [Edema](#)