

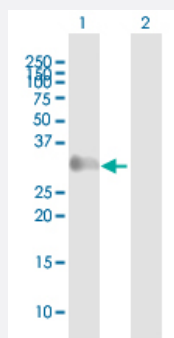
MaxPab®

GAGE1 purified MaxPab mouse polyclonal antibody (B01P)

Catalog # H00002543-B01P

Size 50 ug

Applications

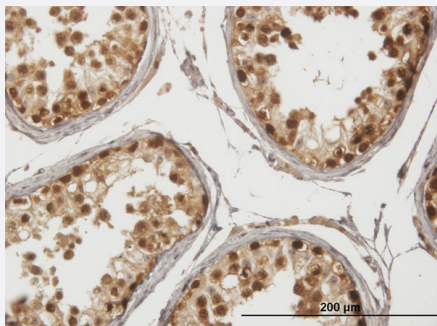


Western Blot (Transfected lysate)

Western Blot analysis of GAGE1 expression in transfected 293T cell line ([H00002543-T01](#)) by GAGE1 MaxPab polyclonal antibody.

Lane 1: GAGE1 transfected lysate(15.29 KDa).

Lane 2: Non-transfected lysate.



Immunohistochemistry (Formalin/PFA-fixed paraffin-embedded sections)

Immunoperoxidase of purified MaxPab antibody to GAGE1 on formalin-fixed paraffin-embedded human testis. [antibody concentration 3 ug/ml]

Specification

Product Description	Mouse polyclonal antibody raised against a full-length human GAGE1 protein.
Immunogen	GAGE1 (NP_001459.2, 1 a.a. ~ 139 a.a) full-length human protein.
Sequence	MSWRGRSTYYWPRPRRYVQPPMIGPMRPEQFSDEVEPATPEEGEPATQRQDPAAAQEGEDE GASAGQGPKPEADSQEQGHPQTGCECEDGPDGQEMDPNPEEVKTPPEEMRSHYVAQTGILW LLMNNCFLNLSRPKP
Host	Mouse
Reactivity	Human

Quality Control Testing	Antibody reactive against mammalian transfected lysate.
Storage Buffer	In 1x PBS, pH 7.4
Storage Instruction	Store at -20°C or lower. Aliquot to avoid repeated freezing and thawing.

Applications

- Western Blot (Transfected lysate)

Western Blot analysis of GAGE1 expression in transfected 293T cell line ([H00002543-T01](#)) by GAGE1 MaxPab polyclonal antibody.

Lane 1: GAGE1 transfected lysate(15.29 KDa).

Lane 2: Non-transfected lysate.

[Protocol Download](#)

- Immunohistochemistry (Formalin/PFA-fixed paraffin-embedded sections)

Immunoperoxidase of purified MaxPab antibody to GAGE1 on formalin-fixed paraffin-embedded human testis. [antibody concentration 3 ug/ml]

[Protocol Download](#)

Gene Info — GAGE1

Entrez GeneID	2543
GeneBank Accession#	NM_001468.3
Protein Accession#	NP_001459.2
Gene Name	GAGE1
Gene Alias	MGC33825
Gene Description	G antigen 1
Omim ID	300594
Gene Ontology	Hyperlink

Gene Summary

This gene belongs to a family of genes that are expressed in a variety of tumors but not in normal tissues, except for the testis. The sequences of the family members are highly related but differ by scattered nucleotide substitutions. The GAGE1 cDNA contains a 143-bp insertion, located in the coding sequence near the termination codon, that is absent from the other cDNAs. The antigenic peptide YRPRPRRY, which is also encoded by several other family members, is recognized by autologous cytolytic T lymphocytes. Nothing is presently known about the function of this protein. An alternatively spliced transcript variant has been found for this gene. [provided by RefSeq]

Other Designations

MZ2-F antigen|OTTHUMP00000025848