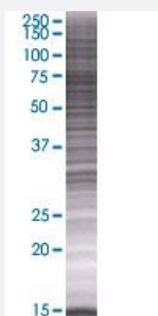


ADAM2 293T Cell Transient Overexpression Lysate(Denatured)

Catalog # H00002515-T01

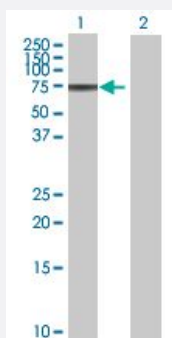
Size 100 uL

Applications



SDS-PAGE Gel

ADAM2 transfected lysate.



Western Blot

Lane 1: ADAM2 transfected lysate (63.8 KDa)

Lane 2: Non-transfected lysate.

Specification

| | |
|-------------------------------|------------------------|
| Transfected Cell Line | 293T |
| Plasmid | pCMV-ADAM2 full-length |
| Host | Human |
| Theoretical MW (kDa) | 63.8 |
| Interspecies Antigen Sequence | Mouse (52) |

Quality Control Testing

Transient overexpression cell lysate was tested with Anti-ADAM2 antibody ([H00002515-B01](#)) by Western Blots.
SDS-PAGE Gel
ADAM2 transfected lysate.
Western Blot
Lane 1: ADAM2 transfected lysate (63.8 KDa)
Lane 2: Non-transfected lysate.

Storage Buffer

1X Sample Buffer (50 mM Tris-HCl, 2% SDS, 10% glycerol, 300 mM 2-mercaptoethanol, 0.01% Bromophenol blue)

Storage Instruction

Store at -80°C. Aliquot to avoid repeated freezing and thawing.

Applications

- Western Blot

Gene Info — ADAM2

Entrez GeneID[2515](#)**GeneBank Accession#**[BC064547.1](#)**Protein Accession#**[AAH64547.1](#)**Gene Name**

ADAM2

Gene Alias

CRYN1, CRYN2, FTNB, PH-30b, PH30

Gene Description

ADAM metallopeptidase domain 2

Omim ID[601533](#)**Gene Ontology**[Hyperlink](#)**Gene Summary**

This gene encodes a member of the ADAM (a disintegrin and metalloprotease domain) family. Members of this family are membrane-anchored proteins structurally related to snake venom disintegrins, and have been implicated in a variety of biological processes involving cell-cell and cell-matrix interactions, including fertilization, muscle development, and neurogenesis. This member is a subunit of an integral sperm membrane glycoprotein called fertilin, which plays an important role in sperm-egg interactions. [provided by RefSeq]

Other Designations

fertilin beta