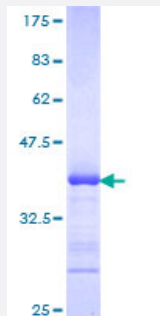


# ADAM2 (Human) Recombinant Protein (Q01)

Catalog # H00002515-Q01

Size 25 ug, 10 ug

## Applications



## Specification

<b>Product Description</b>	Human ADAM2 partial ORF ( NP_001455, 376 a.a. - 475 a.a.) recombinant protein with GST-tag at N-terminal.
<b>Sequence</b>	RLDPFFKQQAVCGNAKLEAGEECDGTEQDCALIGETCCDIATCRFKAGSNCAEGPCCENCLF MSKERMCRPSFEEDLPEYCNCGSSASCPENHYVQTGH
<b>Host</b>	Wheat Germ (in vitro)
<b>Theoretical MW (kDa)</b>	36.74
<b>Interspecies Antigen Sequence</b>	Mouse (46)
<b>Preparation Method</b>	<a href="#">in vitro wheat germ expression system</a>
<b>Purification</b>	Glutathione Sepharose 4 Fast Flow
<b>Quality Control Testing</b>	12.5% SDS-PAGE Stained with Coomassie Blue.
<b>Storage Buffer</b>	50 mM Tris-HCl, 10 mM reduced Glutathione, pH=8.0 in the elution buffer.
<b>Storage Instruction</b>	Store at -80°C. Aliquot to avoid repeated freezing and thawing.
<b>Note</b>	Best use within three months from the date of receipt of this protein.

## Applications

- Enzyme-linked Immunoabsorbent Assay
- Western Blot (Recombinant protein)
- Antibody Production
- Protein Array

## Gene Info — ADAM2

**Entrez GeneID** [2515](#)

**GeneBank Accession#** [NM\\_001464](#)

**Protein Accession#** [NP\\_001455](#)

**Gene Name** ADAM2

**Gene Alias** CRYN1, CRYN2, FTNB, PH-30b, PH30

**Gene Description** ADAM metallopeptidase domain 2

**Omim ID** [601533](#)

**Gene Ontology** [Hyperlink](#)

**Gene Summary** This gene encodes a member of the ADAM (a disintegrin and metalloprotease domain) family. Members of this family are membrane-anchored proteins structurally related to snake venom disintegrins, and have been implicated in a variety of biological processes involving cell-cell and cell-matrix interactions, including fertilization, muscle development, and neurogenesis. This member is a subunit of an integral sperm membrane glycoprotein called fertilin, which plays an important role in sperm-egg interactions. [provided by RefSeq]

**Other Designations** fertilin beta