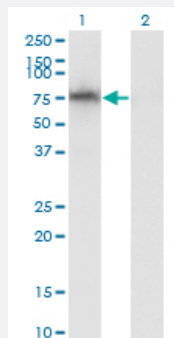


# ADAM2 monoclonal antibody (M02), clone 1B8

Catalog # H00002515-M02

Size 100 ug

## Applications

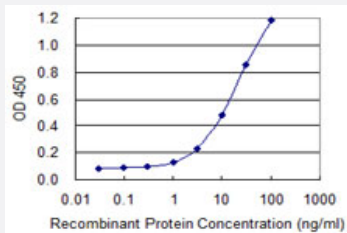


### Western Blot (Transfected lysate)

Western Blot analysis of ADAM2 expression in transfected 293T cell line by ADAM2 monoclonal antibody (M02), clone 1B8.

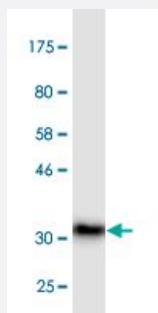
Lane 1: ADAM2 transfected lysate (Predicted MW: 64.8 kDa).

Lane 2: Non-transfected lysate.



### Sandwich ELISA (Recombinant protein)

Detection limit for recombinant GST tagged ADAM2 is 1 ng/ml as a capture antibody.



Western Blot detection against Immunogen (36.74 kDa) .

## Specification

### Product Description

Mouse monoclonal antibody raised against a partial recombinant ADAM2.

<b>Immunogen</b>	ADAM2 (NP_001455, 376 a.a. ~ 475 a.a) partial recombinant protein with GST tag. MW of the GST tag alone is 26 KDa.
<b>Sequence</b>	RLDPFFKQQAVCGNAKLEAGEEEDCGTEQDCALIGETCCDIATCRFKAGSNCAEGPCCENCLF MSKERMCRPSSFEECDLPEYCNCGSSASCPENHYVQTGH
<b>Host</b>	Mouse
<b>Reactivity</b>	Human
<b>Interspecies Antigen Sequence</b>	Mouse (46)
<b>Isotype</b>	IgG2a Kappa
<b>Quality Control Testing</b>	Antibody Reactive Against Recombinant Protein. Western Blot detection against Immunogen (36.74 KDa) .
<b>Storage Buffer</b>	In 1x PBS, pH 7.4
<b>Storage Instruction</b>	Store at -20°C or lower. Aliquot to avoid repeated freezing and thawing.

## Applications

- Western Blot (Transfected lysate)

Western Blot analysis of ADAM2 expression in transfected 293T cell line by ADAM2 monoclonal antibody (M02), clone 1B8.

Lane 1: ADAM2 transfected lysate (Predicted MW: 64.8 KDa).

Lane 2: Non-transfected lysate.

[Protocol Download](#)

- Western Blot (Recombinant protein)

[Protocol Download](#)

- Sandwich ELISA (Recombinant protein)

Detection limit for recombinant GST tagged ADAM2 is 1 ng/ml as a capture antibody.

[Protocol Download](#)

- ELISA

## Gene Info — ADAM2

Entrez GeneID	<a href="#">2515</a>
GeneBank Accession#	<a href="#">NM_001464</a>
Protein Accession#	<a href="#">NP_001455</a>
Gene Name	ADAM2
Gene Alias	CRYN1, CRYN2, FTNB, PH-30b, PH30
Gene Description	ADAM metallopeptidase domain 2
Omim ID	<a href="#">601533</a>
Gene Ontology	<a href="#">Hyperlink</a>
Gene Summary	<p>This gene encodes a member of the ADAM (a disintegrin and metalloprotease domain) family. Members of this family are membrane-anchored proteins structurally related to snake venom disintegrins, and have been implicated in a variety of biological processes involving cell-cell and cell-matrix interactions, including fertilization, muscle development, and neurogenesis. This member is a subunit of an integral sperm membrane glycoprotein called fertilin, which plays an important role in sperm-egg interactions. [provided by RefSeq]</p>
Other Designations	fertilin beta