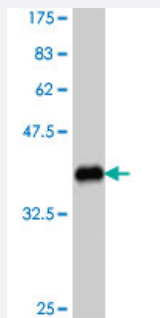


# ADAM2 polyclonal antibody (A01)

Catalog # H00002515-A01

Size 50 uL

## Applications



Western Blot detection against Immunogen (37.11 kDa) .

## Specification

<b>Product Description</b>	Mouse polyclonal antibody raised against a partial recombinant ADAM2.
<b>Immunogen</b>	ADAM2 (NP_001455, 376 a.a. ~ 475 a.a) partial recombinant protein with GST tag.
<b>Sequence</b>	RLDPFFKQQAVCGNAKLEAGEECDGTEQDCALIGETCCDIATCRFKAGSNCAEGPCCENCLF MSKERMCRPSFEEDCLPEYCNCGSSASCPENHYVQTGH
<b>Host</b>	Mouse
<b>Reactivity</b>	Human
<b>Interspecies Antigen Sequence</b>	Mouse (46)
<b>Quality Control Testing</b>	Antibody Reactive Against Recombinant Protein. Western Blot detection against Immunogen (37.11 kDa) .
<b>Storage Buffer</b>	50 % glycerol
<b>Storage Instruction</b>	Store at -20°C or lower. Aliquot to avoid repeated freezing and thawing.

## Applications

- Western Blot (Recombinant protein)

[Protocol Download](#)

- ELISA

## Gene Info — ADAM2

Entrez GeneID [2515](#)

GeneBank Accession# [NM\\_001464](#)

Protein Accession# [NP\\_001455](#)

Gene Name ADAM2

Gene Alias CRYN1, CRYN2, FTNB, PH-30b, PH30

Gene Description ADAM metallopeptidase domain 2

Omim ID [601533](#)

Gene Ontology [Hyperlink](#)

**Gene Summary** This gene encodes a member of the ADAM (a disintegrin and metalloprotease domain) family. Members of this family are membrane-anchored proteins structurally related to snake venom disintegrins, and have been implicated in a variety of biological processes involving cell-cell and cell-matrix interactions, including fertilization, muscle development, and neurogenesis. This member is a subunit of an integral sperm membrane glycoprotein called fertilin, which plays an important role in sperm-egg interactions. [provided by RefSeq]

**Other Designations** fertilin beta