

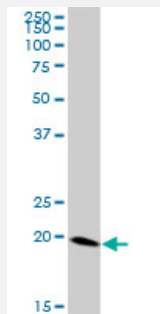
MaxPab®

FTH1 MaxPab mouse polyclonal antibody (B01)

Catalog # H00002495-B01

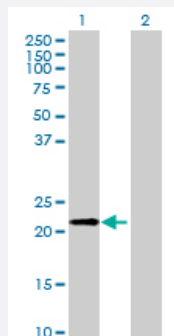
Size 50 uL

Applications



Western Blot (Tissue lysate)

FTH1 MaxPab polyclonal antibody. Western Blot analysis of FTH1 expression in human kidney.



Western Blot (Transfected lysate)

Western Blot analysis of FTH1 expression in transfected 293T cell line ([H00002495-T01](#)) by FTH1 MaxPab polyclonal antibody.

Lane 1: FTH1 transfected lysate(20.24 KDa).

Lane 2: Non-transfected lysate.

Specification

Product Description	Mouse polyclonal antibody raised against a full-length human FTH1 protein.
Immunogen	FTH1 (AAH13724, 1 a.a. ~ 183 a.a) full-length human protein.
Sequence	MTTASTSQVRQNYHQDSEAAINRQINLELYASYVYLSMSYYFDRDDVALKNFAKYFLHQSHEEREH AEKLMKLQNQRGGRIFLQDIKKPDCDDWESGLNAMECALHLEKNVNQSLLELHKLATDKNDPHL CDFIETHYLNQVKAIKELGDHVTNLRKMGAPESGLAEYLFDKHTLGDSDNES
Host	Mouse
Reactivity	Human

Quality Control Testing	Antibody reactive against mammalian transfected lysate.
Storage Buffer	No additive
Storage Instruction	Store at -20°C or lower. Aliquot to avoid repeated freezing and thawing.
Note	For IHC and IF applications, antibody purification with Protein A will be needed prior to use.

Applications

- Western Blot (Tissue lysate)

FTH1 MaxPab polyclonal antibody. Western Blot analysis of FTH1 expression in human kidney.

[Protocol Download](#)

- Western Blot (Transfected lysate)

Western Blot analysis of FTH1 expression in transfected 293T cell line ([H00002495-T01](#)) by FTH1 MaxPab polyclonal antibody.

Lane 1: FTH1 transfected lysate(20.24 KDa).

Lane 2: Non-transfected lysate.

[Protocol Download](#)

Gene Info — FTH1

Entrez GeneID	2495
GeneBank Accession#	BC013724
Protein Accession#	AAH13724
Gene Name	FTH1
Gene Alias	FHC, FTH, FTHL6, MGC104426, PIG15, PLIF
Gene Description	ferritin, heavy polypeptide 1
Omim ID	134770
Gene Ontology	Hyperlink

Gene Summary

This gene encodes the heavy subunit of ferritin, the major intracellular iron storage protein in prokaryotes and eukaryotes. It is composed of 24 subunits of the heavy and light ferritin chains. Variation in ferritin subunit composition may affect the rates of iron uptake and release in different tissues. A major function of ferritin is the storage of iron in a soluble and nontoxic state. Defects in ferritin proteins are associated with several neurodegenerative diseases. This gene has multiple pseudogenes. Several alternatively spliced transcript variants have been observed, but their biological validity has not been determined. [provided by RefSeq]

Other Designations

apoferritin|placenta immunoregulatory factor|proliferation-inducing protein 15

Publication Reference

- [Genetically programmed superparamagnetic behavior of mammalian cells.](#)

Kim T, Moore D, Fussenegger M.

Journal of Biotechnology 2012 Dec; 162(2-3):237.

Application: WB-Tr, Human, HEK 293T cells

Pathway

- [Porphyrin and chlorophyll metabolism](#)

Disease

- [Parkinson disease](#)