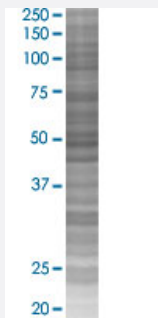


FOSL2 293T Cell Transient Overexpression Lysate(Denatured)

Catalog # H00002355-T02

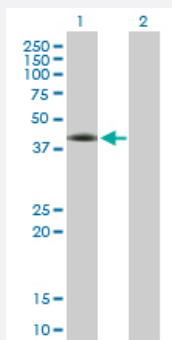
Size 100 uL

Applications



SDS-PAGE Gel

FOSL2 transfected lysate.



Western Blot

Lane 1: FOSL2 transfected lysate (35.20 KDa)

Lane 2: Non-transfected lysate.

Specification

Transfected Cell Line	293T
Plasmid	pCMV-FOSL2 full-length
Host	Human
Theoretical MW (kDa)	35.2
Interspecies Antigen Sequence	Mouse (95); Rat (94)

Quality Control Testing

Transient overexpression cell lysate was tested with Anti-FOSL2 antibody ([H00002355-B01](#)) by Western Blots.
SDS-PAGE Gel
FOSL2 transfected lysate.
Western Blot
Lane 1: FOSL2 transfected lysate (35.20 KDa)
Lane 2: Non-transfected lysate.

Storage Buffer

1X Sample Buffer (50 mM Tris-HCl, 2% SDS, 10% glycerol, 300 mM 2-mercaptoethanol, 0.01% Bromophenol blue)

Storage Instruction

Store at -80°C. Aliquot to avoid repeated freezing and thawing.

Applications

- Western Blot

Gene Info — FOSL2

Entrez GeneID

[2355](#)

GeneBank Accession#

[NM_005253.3](#)

Protein Accession#

[NP_005244.1](#)

Gene Name

FOSL2

Gene Alias

FLJ23306, FRA2

Gene Description

FOS-like antigen 2

Omim ID

[601575](#)

Gene Ontology

[Hyperlink](#)

Gene Summary

The Fos gene family consists of 4 members: FOS, FOSB, FOSL1, and FOSL2. These genes encode leucine zipper proteins that can dimerize with proteins of the JUN family, thereby forming the transcription factor complex AP-1. As such, the FOS proteins have been implicated as regulators of cell proliferation, differentiation, and transformation. [provided by RefSeq]

Other Designations

-

Disease

- [Disease Models](#)
- [Genetic Predisposition to Disease](#)