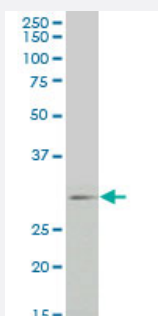


FGF8 monoclonal antibody (M01), clone 2A10

Catalog # H00002253-M01

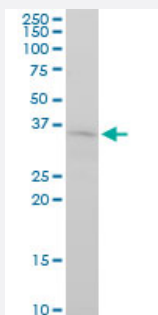
Size 100 ug

Applications



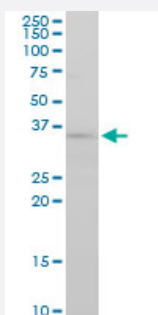
Western Blot (Cell lysate)

FGF8 monoclonal antibody (M01), clone 2A10 Western Blot analysis of FGF8 expression in HepG2 (Cat # L019V1).



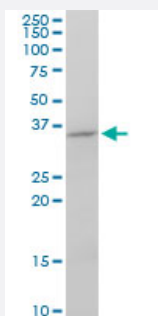
Western Blot (Cell lysate)

FGF8 monoclonal antibody (M01), clone 2A10. Western Blot analysis of FGF8 expression in Raw 264.7(Cat # L024V1).



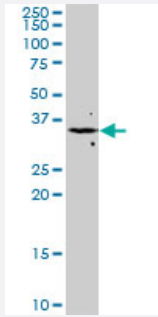
Western Blot (Cell lysate)

FGF8 monoclonal antibody (M01), clone 2A10. Western Blot analysis of FGF8 expression in PC-12(Cat # L012V1).



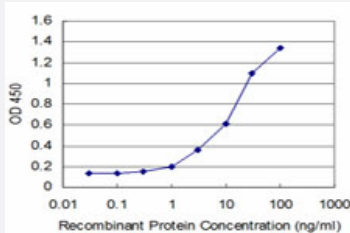
Western Blot (Cell lysate)

FGF8 monoclonal antibody (M01), clone 2A10. Western Blot analysis of FGF8 expression in NIH/3T3(Cat # L018V1).



Western Blot (Cell lysate)

FGF8 monoclonal antibody (M01), clone 2A10. Western Blot analysis of FGF8 expression in Jurkat (Cat # L017V1).



Sandwich ELISA (Recombinant protein)

Detection limit for recombinant GST tagged FGF8 is approximately 0.3ng/ml as a capture antibody.

Specification

Product Description	Mouse monoclonal antibody raised against a partial recombinant FGF8.
Immunogen	FGF8 (NP_149354, 65 a.a. ~ 133 a.a) partial recombinant protein with GST tag. MW of the GST tag alone is 26 KDa.
Sequence	SRRLIRTYQLYSRTSGKHVQVLANKRINAMAEDGDPFAKLIVETDTFGSRVVRVGAETGLYICMNKK GK
Host	Mouse
Reactivity	Human, Mouse, Rat
Interspecies Antigen Sequence	Mouse (100); Rat (100)
Isotype	IgG2a Kappa
Quality Control Testing	Antibody Reactive Against Recombinant Protein.
Storage Buffer	In 1x PBS, pH 7.4
Storage Instruction	Store at -20°C or lower. Aliquot to avoid repeated freezing and thawing.

Applications

- Western Blot (Cell lysate)

FGF8 monoclonal antibody (M01), clone 2A10 Western Blot analysis of FGF8 expression in HepG2 (Cat # L019V1).

[Protocol Download](#)

- Western Blot (Cell lysate)

FGF8 monoclonal antibody (M01), clone 2A10. Western Blot analysis of FGF8 expression in Raw 264.7(Cat # L024V1).

[Protocol Download](#)

- Western Blot (Cell lysate)

FGF8 monoclonal antibody (M01), clone 2A10. Western Blot analysis of FGF8 expression in PC-12(Cat # L012V1).

[Protocol Download](#)

- Western Blot (Cell lysate)

FGF8 monoclonal antibody (M01), clone 2A10. Western Blot analysis of FGF8 expression in NIH/3T3(Cat # L018V1).

[Protocol Download](#)

- Western Blot (Cell lysate)

FGF8 monoclonal antibody (M01), clone 2A10. Western Blot analysis of FGF8 expression in Jurkat (Cat # L017V1).

[Protocol Download](#)

- Sandwich ELISA (Recombinant protein)

Detection limit for recombinant GST tagged FGF8 is approximately 0.3ng/ml as a capture antibody.

[Protocol Download](#)

- ELISA

Gene Info — FGF8

Entrez GeneID [2253](#)

GeneBank Accession# [NM_033164](#)

Protein Accession# [NP_149354](#)

Gene Name	FGF8
Gene Alias	AIGF , HBGF-8, MGC149376
Gene Description	fibroblast growth factor 8 (androgen-induced)
Omim ID	600483
Gene Ontology	Hyperlink
Gene Summary	<p>The protein encoded by this gene is a member of the fibroblast growth factor (FGF) family. FGF family members possess broad mitogenic and cell survival activities, and are involved in a variety of biological processes, including embryonic development, cell growth, morphogenesis, tissue repair, tumor growth and invasion. This protein is known to be a factor that supports androgen and anchorage independent growth of mammary tumor cells. Overexpression of this gene has been shown to increase tumor growth and angiogenesis. The adult expression of this gene is restricted to testes and ovaries. Temporal and spatial pattern of this gene expression suggests its function as an embryonic epithelial factor. Studies of the mouse and chick homologs revealed roles in midbrain and limb development, organogenesis, embryo gastrulation and left-right axis determination. The alternative splicing of this gene results in four transcript variants. [provided by RefSeq]</p>
Other Designations	OTTHUMP00000020348 OTTHUMP00000020349 OTTHUMP00000020350 OTTHUMP00000020351 androgen-induced growth factor fibroblast growth factor 8

Pathway

- [MAPK signaling pathway](#)
- [Melanoma](#)
- [Pathways in cancer](#)
- [Regulation of actin cytoskeleton](#)

Disease

- [Cleft Lip](#)
- [Cleft Palate](#)
- [Hypospadias](#)