

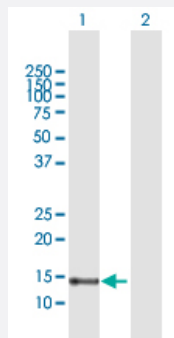
MaxPab®

FABP7 purified MaxPab rabbit polyclonal antibody (D02P)

Catalog # H00002173-D02P

Size 100 ug

Applications



Western Blot (Transfected lysate)

Western Blot analysis of FABP7 expression in transfected 293T cell line ([H00002173-T01](#)) by FABP7 MaxPab polyclonal antibody.

Lane 1: FABP7 transfected lysate(14.63 KDa).

Lane 2: Non-transfected lysate.

Specification

Product Description	Rabbit polyclonal antibody raised against a full-length human FABP7 protein.
Immunogen	FABP7 (AAH12299.1, 1 a.a. ~ 132 a.a) full-length human protein.
Sequence	MVEAFCATWKL TNSQNFDEYMKALGVGFATRQVGNVTKPTV IISQEGDKVVIRTLSTFKNTEISFQ LGEEFDETTADDRNCKSVVSLDGDKL VHIQKWDGKETNFVREIKDGKMVMTLTFGDVVAVRHYE KA
Host	Rabbit
Reactivity	Human
Quality Control Testing	Antibody reactive against mammalian transfected lysate.
Storage Buffer	In 1x PBS, pH 7.4
Storage Instruction	Store at -20°C or lower. Aliquot to avoid repeated freezing and thawing.

Applications

- Western Blot (Transfected lysate)

Western Blot analysis of FABP7 expression in transfected 293T cell line ([H00002173-T01](#)) by FABP7 MaxPab polyclonal antibody.

Lane 1: FABP7 transfected lysate(14.63 KDa).

Lane 2: Non-transfected lysate.

[Protocol Download](#)

Gene Info — FABP7

Entrez GeneID [2173](#)

GeneBank Accession# [BC012299.1](#)

Protein Accession# [AAH12299.1](#)

Gene Name FABP7

Gene Alias B-FABP, BLBP, DKFZp547J2313, FABPB, MRG

Gene Description fatty acid binding protein 7, brain

Omim ID [602965](#)

Gene Ontology [Hyperlink](#)

Gene Summary The protein encoded by this gene is a brain fatty acid binding protein. Fatty acid binding proteins (FABPs) are a family of small, highly conserved, cytoplasmic proteins that bind long-chain fatty acids and other hydrophobic ligands. FABPs are thought to play roles in fatty acid uptake, transport, and metabolism. [provided by RefSeq]

Other Designations OTTHUMP00000017118|brain lipid binding protein|mammary-derived growth inhibitor-related

Pathway

- [PPAR signaling pathway](#)

Disease

- [Autistic Disorder](#)

- [Bipolar Disorder](#)
- [Genetic Predisposition to Disease](#)
- [Schizophrenia](#)