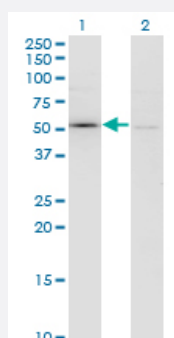


# F11 monoclonal antibody (M01), clone 2H8

Catalog # H00002160-M01

Size 100 ug

## Applications

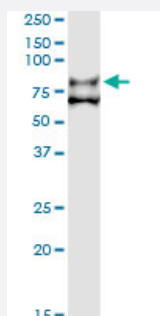


### Western Blot (Transfected lysate)

Western Blot analysis of F11 expression in transfected 293T cell line by F11 monoclonal antibody (M01), clone 2H8.

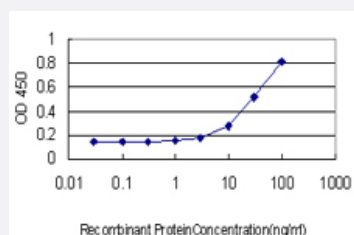
Lane 1: F11 transfected lysate (70.1 KDa).

Lane 2: Non-transfected lysate.



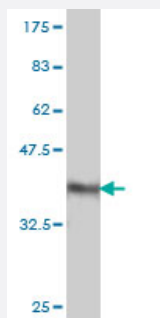
### Immunoprecipitation

Immunoprecipitation of F11 transfected lysate using anti-F11 monoclonal antibody and Protein A Magnetic Bead, and immunoblotted with F11 MaxPab rabbit polyclonal antibody.



### Sandwich ELISA (Recombinant protein)

Detection limit for recombinant GST tagged F11 is approximately 10 ng/ml as a capture antibody.



Western Blot detection against Immunogen (36.74 KDa) .

## Specification

<b>Product Description</b>	Mouse monoclonal antibody raised against a partial recombinant F11.
<b>Immunogen</b>	F11 (NP_000119, 286 a.a. ~ 385 a.a) partial recombinant protein with GST tag. MW of the GST tag alone is 26 KDa.
<b>Sequence</b>	SIPVFCHSSFYHDTDFLGEELDIVAAKSHEACQKLCTNAVRCQFFTYTPAQASCNEGKGKCYLKLSSNGSPTKILHGRGGISGYTLRLCKMDNECTTIK
<b>Host</b>	Mouse
<b>Reactivity</b>	Human
<b>Isotype</b>	IgG1 Kappa
<b>Quality Control Testing</b>	Antibody Reactive Against Recombinant Protein. Western Blot detection against Immunogen (36.74 KDa) .
<b>Storage Buffer</b>	In 1x PBS, pH 7.4
<b>Storage Instruction</b>	Store at -20°C or lower. Aliquot to avoid repeated freezing and thawing.

## Applications

- Western Blot (Transfected lysate)

Western Blot analysis of F11 expression in transfected 293T cell line by F11 monoclonal antibody (M01), clone 2H8.

Lane 1: F11 transfected lysate(70.1 KDa).

Lane 2: Non-transfected lysate.

[Protocol Download](#)

- Western Blot (Recombinant protein)

[Protocol Download](#)

- Immunoprecipitation

Immunoprecipitation of F11 transfected lysate using anti-F11 monoclonal antibody and Protein A Magnetic Bead, and immunoblotted with F11 MaxPab rabbit polyclonal antibody.

[Protocol Download](#)

- Sandwich ELISA (Recombinant protein)

Detection limit for recombinant GST tagged F11 is approximately 10ng/ml as a capture antibody.

[Protocol Download](#)

- ELISA

## Gene Info — F11

Entrez GeneID [2160](#)

GeneBank Accession# [NM\\_000128](#)

Protein Accession# [NP\\_000119](#)

Gene Name F11

Gene Alias FXI, MGC141891

Gene Description coagulation factor XI

Omim ID [264900](#)

Gene Ontology [Hyperlink](#)

**Gene Summary** This gene encodes coagulation factor XI of the blood coagulation cascade. This protein is present in plasma as a zymogen, which is a unique plasma coagulation enzyme because it exists as a homodimer consisting of two identical polypeptide chains linked by disulfide bonds. During activation of the plasma factor XI, an internal peptide bond is cleaved by factor XIIa (or XII) in each of the two chains, resulting in activated factor XIa, a serine protease composed of two heavy and two light chains held together by disulfide bonds. This activated plasma factor XI triggers the middle phase of the intrinsic pathway of blood coagulation by activating factor IX. Defects in this factor lead to Rosenthal syndrome, a blood coagulation abnormality. [provided by RefSeq]

**Other Designations** plasma thromboplastin antecedent|platelet coagulation factor XI

## Pathway

- [Complement and coagulation cascades](#)

## Disease

- [Cardiovascular Diseases](#)
- [Diabetes Mellitus](#)
- [Edema](#)
- [Factor XI Deficiency](#)
- [Genetic Predisposition to Disease](#)
- [Hypertension](#)
- [Kidney Failure](#)
- [Pre-Eclampsia](#)
- [Thrombophilia](#)
- [Venous Thrombosis](#)