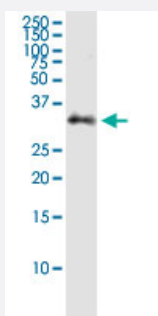


STX2 (Human) IP-WB Antibody Pair

Catalog # H00002054-PW2

Size 1 Set

Applications



Immunoprecipitation of STX2 transfected lysate using rabbit polyclonal anti-STX2 and Protein A Magnetic Bead ([U0007](#)), and immunoblotted with mouse purified polyclonal anti-STX2.

Specification

Product Description

This IP-WB antibody pair set comes with one antibody for immunoprecipitation and another to detect the precipitated protein in western blot.

Reactivity

Human

Quality Control Testing

Immunoprecipitation-Western Blot (IP-WB)

Immunoprecipitation of STX2 transfected lysate using rabbit polyclonal anti-STX2 and Protein A Magnetic Bead ([U0007](#)), and immunoblotted with mouse purified polyclonal anti-STX2.

Supplied Product

Antibody pair set content:

1. Antibody pair for IP: rabbit polyclonal anti-STX2 (300 ul)
2. Antibody pair for WB: mouse purified polyclonal anti-STX2 (50 ug)

Storage Instruction

Store reagents of the antibody pair set at -20°C or lower. Please aliquot to avoid repeated freeze thaw cycle. Reagents should be returned to -20°C storage immediately after use.

Applications

- Immunoprecipitation-Western Blot

[Protocol Download](#)

Gene Info — STX2

Entrez GeneID	2054
Gene Name	STX2
Gene Alias	EPIM, EPM, MGC51014, STX2A, STX2B, STX2C
Gene Description	syntaxin 2
Omim ID	132350
Gene Ontology	Hyperlink
Gene Summary	<p>The product of this gene belongs to the syntaxin/epimorphin family of proteins. The syntaxins are a large protein family implicated in the targeting and fusion of intracellular transport vesicles. The product of this gene regulates epithelial-mesenchymal interactions and epithelial cell morphogenesis and activation. Alternatively spliced transcript variants encoding different isoforms have been identified. [provided by RefSeq]</p>
Other Designations	epimorphin

Pathway

- [SNARE interactions in vesicular transport](#)