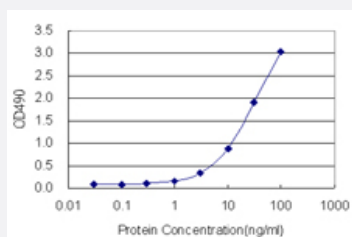


STX2 (Human) Matched Antibody Pair

Catalog # H00002054-AP21

Size 1 Set

Applications



Sandwich ELISA detection sensitivity ranging from 0.3 ng/ml to 100 ng/ml.

Specification

Product Description	This antibody pair set comes with a matched antibody pair to detect and quantify the protein level of human STX2.
Reactivity	Human
Quality Control Testing	Standard curve using recombinant protein (H00002054-P01) as an analyte. Sandwich ELISA detection sensitivity ranging from 0.3 ng/ml to 100 ng/ml.
Supplied Product	Antibody pair set content: 1. Capture antibody: rabbit MaxPab® affinity purified polyclonal anti-STX2 (100 ug) 2. Detection antibody: mouse purified polyclonal anti-STX2 (20 ug) *Reagents are sufficient for at least 1-2 x 96 well plates using recommended protocols.
Storage Instruction	Store reagents of the antibody pair set at -20°C or lower. Please aliquot to avoid repeated freeze thaw cycle. Reagents should be returned to -20°C storage immediately after use.

Applications

- ELISA Pair (Recombinant protein)

[Protocol Download](#)

Gene Info — STX2

Entrez GeneID	2054
Gene Name	STX2
Gene Alias	EPIM, EPM, MGC51014, STX2A, STX2B, STX2C
Gene Description	syntaxin 2
Omim ID	132350
Gene Ontology	Hyperlink
Gene Summary	<p>The product of this gene belongs to the syntaxin/epimorphin family of proteins. The syntaxins are a large protein family implicated in the targeting and fusion of intracellular transport vesicles. The product of this gene regulates epithelial-mesenchymal interactions and epithelial cell morphogenesis and activation. Alternatively spliced transcript variants encoding different isoforms have been identified. [provided by RefSeq]</p>
Other Designations	epimorphin

Pathway

- [SNARE interactions in vesicular transport](#)