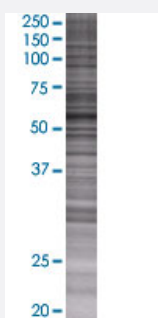


EPHX2 293T Cell Transient Overexpression Lysate(Denatured)

Catalog # H00002053-T02

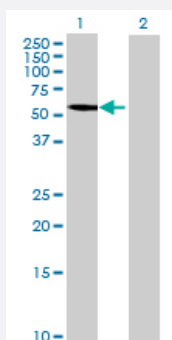
Size 100 uL

Applications



SDS-PAGE Gel

EPHX2 transfected lysate.



Western Blot

Lane 1: EPHX2 transfected lysate (61.16 KDa)

Lane 2: Non-transfected lysate.

Specification

Transfected Cell Line	293T
Plasmid	pCMV-EPHX2 full-length
Host	Human
Theoretical MW (kDa)	61.16
Interspecies Antigen Sequence	Mouse (73); Rat (73)

Quality Control Testing	<p>Transient overexpression cell lysate was tested with Anti-EPHX2 antibody (H00002053-B02) by Western Blots.</p> <p>SDS-PAGE Gel</p> <p>EPHX2 transfected lysate.</p> <p>Western Blot</p> <p>Lane 1: EPHX2 transfected lysate (61.16 KDa)</p> <p>Lane 2: Non-transfected lysate.</p>
Storage Buffer	1X Sample Buffer (50 mM Tris-HCl, 2% SDS, 10% glycerol, 300 mM 2-mercaptoethanol, 0.01% Bromophenol blue)
Storage Instruction	Store at -80°C. Aliquot to avoid repeated freezing and thawing.

Applications

- Western Blot

Gene Info — EPHX2

Entrez GeneID	2053
GeneBank Accession#	NM_001979.4
Protein Accession#	NP_001970.2
Gene Name	EPHX2
Gene Alias	CEH, SEH
Gene Description	epoxide hydrolase 2, cytoplasmic
Omim ID	132811 143890
Gene Ontology	Hyperlink
Gene Summary	<p>This gene encodes a member of the epoxide hydrolase family. The protein, found in both the cytosol and peroxisomes, binds to specific epoxides and converts them to the corresponding dihydro diols. Mutations in this gene have been associated with familial hypercholesterolemia. Alternate transcriptional splice variants of this gene have been observed but have not been thoroughly characterized. [provided by RefSeq]</p>
Other Designations	epoxide hydratase epoxide hydrolase 2, cytosolic epoxide hydrolase, soluble

Pathway

- [Arachidonic acid metabolism](#)
- [Metabolic pathways](#)
- [Tetrachloroethene degradation](#)

Disease

- [Asthma](#)
- [Atherosclerosis](#)
- [Brain Ischemia](#)
- [Calcinosis](#)
- [Cardiovascular Diseases](#)
- [Carotid Artery Diseases](#)
- [Cerebrovascular Accident](#)
- [Chronic Disease](#)
- [Colorectal Neoplasms](#)
- [Connective Tissue Diseases](#)
- [Coronary Artery Disease](#)
- [Coronary Disease](#)
- [Coronary Restenosis](#)
- [Diabetes Mellitus](#)
- [Disease Progression](#)
- [Edema](#)
- [Fetal Diseases](#)
- [Genetic Predisposition to Disease](#)
- [Glomerulonephritis](#)
- [Head and Neck Neoplasms](#)

- [Hypertension](#)
- [Infection](#)
- [Inflammation](#)
- [Insulin Resistance](#)
- [Ischemia](#)
- [Kidney Failure](#)
- [Lung Neoplasms](#)
- [Lymphoma](#)
- [Musculoskeletal Diseases](#)
- [Myocardial Ischemia](#)
- [Neoplasm Recurrence](#)
- [Neoplasms](#)
- [Parkinson disease](#)
- [Pregnancy Complications](#)
- [Premature Birth](#)
- [Prostate cancer](#)
- [Pulmonary Disease](#)
- [Skin Diseases](#)
- [Stomach Neoplasms](#)
- [Stroke](#)
- [Tobacco Use Disorder](#)
- [Urinary Bladder Neoplasms](#)
- [Werner syndrome](#)