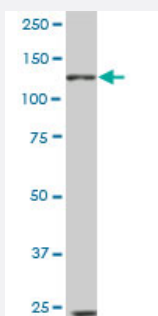


## EPHB6 monoclonal antibody (M03), clone 5D8

Catalog # H00002051-M03

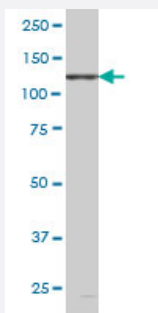
Size 100 ug

### Applications



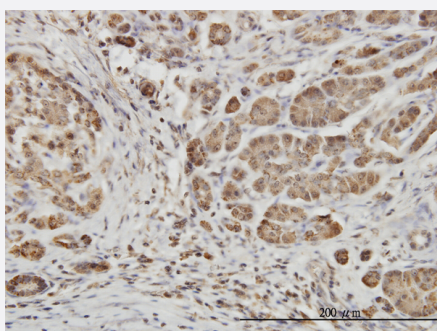
#### Western Blot (Cell lysate)

EPHB6 monoclonal antibody (M03), clone 5D8. Western Blot analysis of EPHB6 expression in NIH/3T3 ( Cat # L018V1 ).



#### Western Blot (Cell lysate)

EPHB6 monoclonal antibody (M03), clone 5D8 Western Blot analysis of EPHB6 expression in PC-12 ( Cat # L012V1 ).

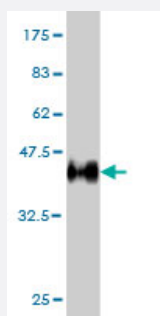
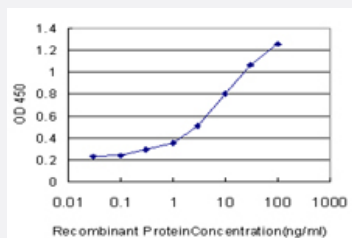


#### Immunohistochemistry (Formalin/PFA-fixed paraffin-embedded sections)

Immunoperoxidase of monoclonal antibody to EPHB6 on formalin-fixed paraffin-embedded human pancreas. [antibody concentration 3 ug/ml]

## Sandwich ELISA (Recombinant protein)

Detection limit for recombinant GST tagged EPHB6 is approximately 0.3ng/ml as a capture antibody.



Western Blot detection against Immunogen (36.63 KDa) .

## Specification

<b>Product Description</b>	Mouse monoclonal antibody raised against a partial recombinant EPHB6.
<b>Immunogen</b>	EPHB6 (NP_004436, 23 a.a. ~ 122 a.a) partial recombinant protein with GST tag. MW of the GST tag alone is 26 KDa.
<b>Sequence</b>	DTTGETSEIGWLTYPGGWDEVSVLDDQRRRLTRTFEACHVAGAPPGTGQDNWLQTHFVERRGA QRAHIRLHFSVRACSSLGVSGGTCRETFTLYRQAEE
<b>Host</b>	Mouse
<b>Reactivity</b>	Human, Mouse, Rat
<b>Interspecies Antigen Sequence</b>	Mouse (97); Rat (97)
<b>Isotype</b>	IgG2a Kappa
<b>Quality Control Testing</b>	Antibody Reactive Against Recombinant Protein. Western Blot detection against Immunogen (36.63 KDa) .
<b>Storage Buffer</b>	In 1x PBS, pH 7.4
<b>Storage Instruction</b>	Store at -20°C or lower. Aliquot to avoid repeated freezing and thawing.

## Applications

- Western Blot (Cell lysate)

EPHB6 monoclonal antibody (M03), clone 5D8. Western Blot analysis of EPHB6 expression in NIH/3T3 ( Cat # L018V1 ).

[Protocol Download](#)

- Western Blot (Cell lysate)

EPHB6 monoclonal antibody (M03), clone 5D8 Western Blot analysis of EPHB6 expression in PC-12 ( Cat # L012V1 ).

[Protocol Download](#)

- Western Blot (Recombinant protein)

[Protocol Download](#)

- Immunohistochemistry (Formalin/PFA-fixed paraffin-embedded sections)

Immunoperoxidase of monoclonal antibody to EPHB6 on formalin-fixed paraffin-embedded human pancreas. [antibody concentration 3 ug/ml]

[Protocol Download](#)

- Sandwich ELISA (Recombinant protein)

Detection limit for recombinant GST tagged EPHB6 is approximately 0.3ng/ml as a capture antibody.

[Protocol Download](#)

- ELISA

## Gene Info — EPHB6

Entrez GeneID	<a href="#">2051</a>
---------------	----------------------

GeneBank Accession#	<a href="#">NM_004445</a>
---------------------	---------------------------

Protein Accession#	<a href="#">NP_004436</a>
--------------------	---------------------------

Gene Name	EPHB6
-----------	-------

Gene Alias	HEP, MGC129910, MGC129911
------------	---------------------------

Gene Description	EPH receptor B6
------------------	-----------------

Omim ID [602757](#)

Gene Ontology [Hyperlink](#)

**Gene Summary**

Ephrin receptors and their ligands, the ephrins, mediate numerous developmental processes, particularly in the nervous system. Based on their structures and sequence relationships, ephrins are divided into the ephrin-A (EFNA) class, which are anchored to the membrane by a glycosylphosphatidylinositol linkage, and the ephrin-B (EFNB) class, which are transmembrane proteins. The Eph family of receptors are divided into 2 groups based on the similarity of their extracellular domain sequences and their affinities for binding ephrin-A and ephrin-B ligands. Ephrin receptors make up the largest subgroup of the receptor tyrosine kinase (RTK) family. The ephrin receptor encoded by this gene lacks the kinase activity of most receptor tyrosine kinases and binds to ephrin-B ligands. [provided by RefSeq]

**Other Designations** ephrin receptor EphB6

## Publication Reference

- [Ephrin/Eph receptor interaction facilitates macrophage recognition of differentiating human erythroblasts.](#)

Hampton-O'Neil LA, Severn CE, Cross SJ, Gurung S, Nobes CD, Toye AM.

Haematologica 2019 Jun; [Epub].

Application: WB-Tr, Human, HEK 293T, HeLa cells, Erythroblasts

- [Dynamic Interactions between Cancer Cells and the Embryonic Microenvironment Regulate Cell Invasion and Reveal EphB6 as a Metastasis Suppressor.](#)

Bailey CM, Kulesa PM.

Molecular Cancer Research 2014 Sep; 12(9):1303.

Application: WB, Human, C8161 cells

## Pathway

- [Axon guidance](#)