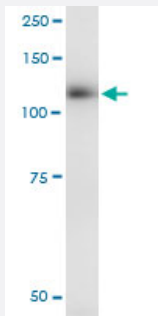


EPHB3 (Human) IP-WB Antibody Pair

Catalog # H00002049-PW1

Size 1 Set

Applications



Immunoprecipitation of EPHB3 transfected lysate using mouse monoclonal anti-EPHB3 and Protein A Magnetic Bead ([U0007](#)), and immunoblotted with mouse monoclonal anti-EPHB3.

Specification

Product Description	This IP-WB antibody pair set comes with one antibody for immunoprecipitation and another to detect the precipitated protein in western blot.
Reactivity	Human
Quality Control Testing	Immunoprecipitation-Western Blot (IP-WB) Immunoprecipitation of EPHB3 transfected lysate using mouse monoclonal anti-EPHB3 and Protein A Magnetic Bead (U0007), and immunoblotted with mouse monoclonal anti-EPHB3.
Supplied Product	Antibody pair set content: 1. Antibody pair for IP: mouse monoclonal anti-EPHB3 (300 ug) 2. Antibody pair for WB: mouse monoclonal anti-EPHB3 (50 ug)
Storage Instruction	Store reagents of the antibody pair set at -20°C or lower. Please aliquot to avoid repeated freeze thaw cycle. Reagents should be returned to -20°C storage immediately after use.

Applications

- Immunoprecipitation-Western Blot

[Protocol Download](#)

Gene Info — EPHB3

Entrez GeneID	2049
Gene Name	EPHB3
Gene Alias	ETK2, HEK2, TYRO6
Gene Description	EPH receptor B3
Omim ID	601839
Gene Ontology	Hyperlink
Gene Summary	Ephrin receptors and their ligands, the ephrins, mediate numerous developmental processes, particularly in the nervous system. Based on their structures and sequence relationships, ephrins are divided into the ephrin-A (EFNA) class, which are anchored to the membrane by a glycosylphosphatidylinositol linkage, and the ephrin-B (EFNB) class, which are transmembrane proteins. The Eph family of receptors are divided into 2 groups based on the similarity of their extracellular domain sequences and their affinities for binding ephrin-A and ephrin-B ligands. Ephrin receptors make up the largest subgroup of the receptor tyrosine kinase (RTK) family. The protein encoded by this gene is a receptor for ephrin-B family members. [provided by RefSeq]
Other Designations	EPH-like tyrosine kinase-2 ephrin receptor EphB3 human embryo kinase 2

Pathway

- [Axon guidance](#)

Disease

- [Cleft Lip](#)
- [Cleft Palate](#)
- [Tooth Abnormalities](#)