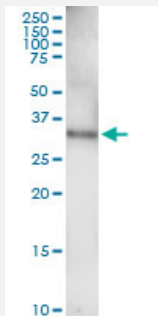


EPHA7 (Human) IP-WB Antibody Pair

Catalog # H00002045-PW1

Size 1 Set

Applications



Immunoprecipitation of EPHA7 transfected lysate using rabbit polyclonal anti-EPHA7 and Protein A Magnetic Bead ([U0007](#)), and immunoblotted with mouse polyclonal anti-EPHA7.

Specification

Product Description	This IP-WB antibody pair set comes with one antibody for immunoprecipitation and another to detect the precipitated protein in western blot.
Reactivity	Human
Quality Control Testing	Immunoprecipitation-Western Blot (IP-WB) Immunoprecipitation of EPHA7 transfected lysate using rabbit polyclonal anti-EPHA7 and Protein A Magnetic Bead (U0007), and immunoblotted with mouse polyclonal anti-EPHA7.
Supplied Product	Antibody pair set content: 1. Antibody pair for IP: rabbit polyclonal anti-EPHA7 (300 ul) 2. Antibody pair for WB: mouse polyclonal anti-EPHA7 (50 ul)
Storage Instruction	Store reagents of the antibody pair set at -20°C or lower. Please aliquot to avoid repeated freeze thaw cycle. Reagents should be returned to -20°C storage immediately after use.

Applications

- Immunoprecipitation-Western Blot

[Protocol Download](#)

Gene Info — EPHA7

Entrez GeneID [2045](#)**Gene Name** EPHA7**Gene Alias** EHK3, HEK11**Gene Description** EPH receptor A7**Omim ID** [602190](#)**Gene Ontology** [Hyperlink](#)

Gene Summary This gene belongs to the ephrin receptor subfamily of the protein-tyrosine kinase family. EPH and EPH-related receptors have been implicated in mediating developmental events, particularly in the nervous system. Receptors in the EPH subfamily typically have a single kinase domain and an extracellular region containing a Cys-rich domain and 2 fibronectin type III repeats. The ephrin receptors are divided into 2 groups based on the similarity of their extracellular domain sequences and their affinities for binding ephrin-A and ephrin-B ligands. [provided by RefSeq]

Other Designations Eph homology kinase-3|OTTHUMP00000016875|OTTHUMP00000040586|ephrin receptor EphA7|ephrin type-A receptor 7|receptor protein-tyrosine kinase HEK11|tyrosine-protein kinase receptor EHK-3

Pathway

- [Axon guidance](#)

Disease

- [Tobacco Use Disorder](#)