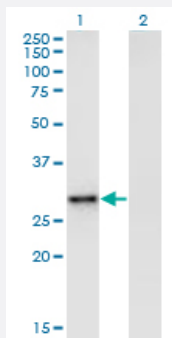


# EPHA7 monoclonal antibody (M03A), clone 3C3

Catalog # H00002045-M03A

Size 200 uL

## Applications

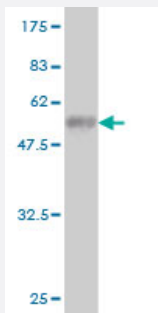


### Western Blot (Transfected lysate)

Western Blot analysis of EPHA7 expression in transfected 293T cell line by EPHA7 monoclonal antibody (M03A), clone 3C3.

Lane 1: EPHA7 transfected lysate (Predicted MW: 31.8 KDa).

Lane 2: Non-transfected lysate.



Western Blot detection against Immunogen (56.32 KDa) .

## Specification

### Product Description

Mouse monoclonal antibody raised against a full length recombinant EPHA7.

### Immunogen

EPHA7 (AAH27940.1, 1 a.a. ~ 279 a.a) full-length recombinant protein with GST tag. MW of the GST tag alone is 26 KDa.

### Sequence

MVFQTRYPSWIIICYWLLRFAHTGEAQAQKEVLLLD SKAQQTELEWISSPPNGWEEISGLDENYT  
PIRTYQVCQVMEPNQNNWLR TNWISKGNAQRIFVELKFTLRDCNSLPGVLGTCKETFNLYYETDY  
DTGRNVRENLYVKIDTIAADESFTQGD LGERKMKLNTEVREIGPLSKKGFYLA FQDVGACIALVSV  
KVYYKKCWSIIENLAIFPDVTVTGSEFSS LVEVRGTCVSSAEEEEAENAPRMHCSAEGEWLVPIGKCI  
CKAGYQQKGDTCECK

### Host

Mouse

Reactivity	Human
Isotype	IgM Kappa
Quality Control Testing	Antibody Reactive Against Recombinant Protein. Western Blot detection against Immunogen (56.32 KDa) .
Storage Buffer	In ascites fluid
Storage Instruction	Store at -20°C or lower. Aliquot to avoid repeated freezing and thawing.

## Applications

- Western Blot (Transfected lysate)

Western Blot analysis of EPHA7 expression in transfected 293T cell line by EPHA7 monoclonal antibody (M03A), clone 3C3.

Lane 1: EPHA7 transfected lysate (Predicted MW: 31.8 KDa).

Lane 2: Non-transfected lysate.

[Protocol Download](#)

- Western Blot (Recombinant protein)

[Protocol Download](#)

- ELISA

## Gene Info — EPHA7

Entrez GeneID	<a href="#">2045</a>
GeneBank Accession#	<a href="#">BC027940</a>
Protein Accession#	<a href="#">AAH27940.1</a>
Gene Name	EPHA7
Gene Alias	EHK3, HEK11
Gene Description	EPH receptor A7
Omim ID	<a href="#">602190</a>
Gene Ontology	<a href="#">Hyperlink</a>

**Gene Summary**

This gene belongs to the ephrin receptor subfamily of the protein-tyrosine kinase family. EPH and EPH-related receptors have been implicated in mediating developmental events, particularly in the nervous system. Receptors in the EPH subfamily typically have a single kinase domain and an extracellular region containing a Cys-rich domain and 2 fibronectin type III repeats. The ephrin receptors are divided into 2 groups based on the similarity of their extracellular domain sequences and their affinities for binding ephrin-A and ephrin-B ligands. [provided by RefSeq]

**Other Designations**

Eph homology kinase-3|OTTHUMP00000016875|OTTHUMP00000040586|ephrin receptor EphA7|ephrin type-A receptor 7|receptor protein-tyrosine kinase HEK11|tyrosine-protein kinase receptor EHK-3

**Pathway**

- [Axon guidance](#)

**Disease**

- [Tobacco Use Disorder](#)