

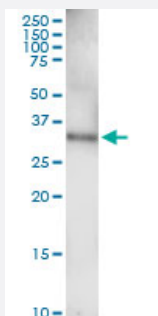
MaxPab®

EPHA7 MaxPab rabbit polyclonal antibody (D01)

Catalog # H00002045-D01

Size 100 uL

Applications



Immunoprecipitation

Immunoprecipitation of EPHA7 transfected lysate using anti-EPHA7 MaxPab rabbit polyclonal antibody and Protein A Magnetic Bead, and immunoblotted with EPHA7 MaxPab mouse polyclonal antibody (B01) ([H00002045-B01](#)).

Specification

Product Description

Rabbit polyclonal antibody raised against a full-length human EPHA7 protein.

Immunogen

EPHA7 (AAH27940.1, 1 a.a. ~ 279 a.a) full-length human protein.

Sequence

MVFQTRYPSWIILCYWLLRFAHTGEAQAQKEVLLLD SKAQQTELEWISSPPNGWEEISGLDENYT
PIRTYQVCQVMEPNQNNWLRTNWISKGNAQRIFVELKFTLRDCNSLPGVLGTCKETFNLYYETDY
DTGRNVRENLYVKIDTIAADESFTQGDLGERKMKLNTEVREIGPLSKKGFYLAQDVGACIALVSV
KVYYKKCWSIIENLAIFPDVTGTSEFSSLVEVRGTCVSSAEAAAENAPRMHCSAEGEWLVPIGKCI
CKAGYQQKGDTCECK

Host

Rabbit

Reactivity

Human

Quality Control Testing

Antibody reactive against mammalian transfected lysate.

Storage Buffer

No additive

Storage Instruction

Store at -20°C or lower. Aliquot to avoid repeated freezing and thawing.

Applications

- Immunoprecipitation

Immunoprecipitation of EPHA7 transfected lysate using anti-EPHA7 MaxPab rabbit polyclonal antibody and Protein A Magnetic Bead, and immunoblotted with EPHA7 MaxPab mouse polyclonal antibody (B01) ([H00002045-B01](#)).

[Protocol Download](#)

Gene Info — EPHA7

Entrez GeneID [2045](#)

GeneBank Accession# [BC027940.1](#)

Protein Accession# [AAH27940.1](#)

Gene Name EPHA7

Gene Alias EHK3, HEK11

Gene Description EPH receptor A7

Omim ID [602190](#)

Gene Ontology [Hyperlink](#)

Gene Summary This gene belongs to the ephrin receptor subfamily of the protein-tyrosine kinase family. EPH and EPH-related receptors have been implicated in mediating developmental events, particularly in the nervous system. Receptors in the EPH subfamily typically have a single kinase domain and an extracellular region containing a Cys-rich domain and 2 fibronectin type III repeats. The ephrin receptors are divided into 2 groups based on the similarity of their extracellular domain sequences and their affinities for binding ephrin-A and ephrin-B ligands. [provided by RefSeq]

Other Designations Eph homology kinase-3|OTTHUMP00000016875|OTTHUMP00000040586|ephrin receptor EphA7|ephrin type-A receptor 7|receptor protein-tyrosine kinase HEK11|tyrosine-protein kinase receptor EHK-3

Pathway

- [Axon guidance](#)

Disease

- [Tobacco Use Disorder](#)