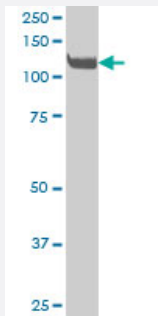


# EPHA3 monoclonal antibody (M02), clone 3E9

Catalog # H00002042-M02

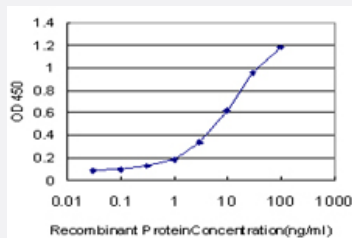
Size 100 ug

## Applications



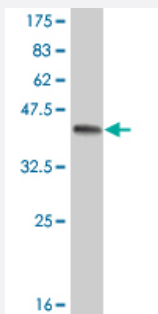
### Western Blot (Cell lysate)

EPHA3 monoclonal antibody (M02), clone 3E9 Western Blot analysis of EPHA3 expression in HeLa ( Cat # L013V1 ).



### Sandwich ELISA (Recombinant protein)

Detection limit for recombinant GST tagged EPHA3 is approximately 0.3ng/ml as a capture antibody.



Western Blot detection against Immunogen (39.38 kDa) .

## Specification

### Product Description

Mouse monoclonal antibody raised against a partial recombinant EPHA3.

<b>Immunogen</b>	EPHA3 (AAH63282, 202 a.a. ~ 326 a.a) partial recombinant protein with GST tag. MW of the GST tag alone is 26 KDa.
<b>Sequence</b>	CPFTVKNLAMFPDTPMDSQLVEVRGSCVNNNSKEEDPPRMYCSTEGEWLVPIGKCSCNAGYE ERGFMCQACRPGFYKALDGNMKCAKCPHSSTQEDGSMNCRCENNYFRADKDPPSMACTRP P
<b>Host</b>	Mouse
<b>Reactivity</b>	Human
<b>Interspecies Antigen Sequence</b>	Mouse (95)
<b>Isotype</b>	IgG2b Kappa
<b>Quality Control Testing</b>	Antibody Reactive Against Recombinant Protein. Western Blot detection against Immunogen (39.38 KDa) .
<b>Storage Buffer</b>	In 1x PBS, pH 7.4
<b>Storage Instruction</b>	Store at -20°C or lower. Aliquot to avoid repeated freezing and thawing.

## Applications

- Western Blot (Cell lysate)

EPHA3 monoclonal antibody (M02), clone 3E9 Western Blot analysis of EPHA3 expression in HeLa ( Cat # L013V1 ).

[Protocol Download](#)

- Western Blot (Recombinant protein)

[Protocol Download](#)

- Sandwich ELISA (Recombinant protein)

Detection limit for recombinant GST tagged EPHA3 is approximately 0.3ng/ml as a capture antibody.

[Protocol Download](#)

- ELISA

## Gene Info — EPHA3

Entrez GeneID

[2042](#)

GeneBank Accession#	<a href="#">BC063282</a>
Protein Accession#	<a href="#">AAH63282</a>
Gene Name	EPHA3
Gene Alias	ETK, ETK1, HEK, HEK4, TYRO4
Gene Description	EPH receptor A3
Omim ID	<a href="#">179611</a>
Gene Ontology	<a href="#">Hyperlink</a>
Gene Summary	<p>This gene belongs to the ephrin receptor subfamily of the protein-tyrosine kinase family. EPH and EPH-related receptors have been implicated in mediating developmental events, particularly in the nervous system. Receptors in the EPH subfamily typically have a single kinase domain and an extracellular region containing a Cys-rich domain and 2 fibronectin type III repeats. The ephrin receptors are divided into 2 groups based on the similarity of their extracellular domain sequences and their affinities for binding ephrin-A and ephrin-B ligands. This gene encodes a protein that binds ephrin-A ligands. Two alternatively spliced transcript variants have been described for this gene. [ provided by RefSeq</p>
Other Designations	TYRO4 protein tyrosine kinase eph-like tyrosine kinase 1 ephrin receptor EphA3 human embryo kinase 1

## Pathway

- [Axon guidance](#)

## Disease

- [Genetic Predisposition to Disease](#)
- [Pancreatic cancer](#)
- [Pancreatic Neoplasms](#)