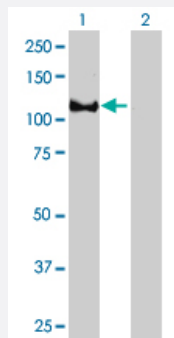


EPB41 monoclonal antibody (M01), clone 3D9

Catalog # H00002035-M01

Size 100 ug

Applications

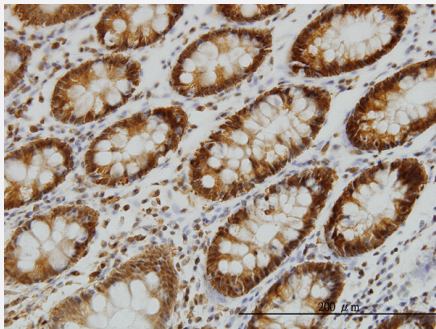


Western Blot (Transfected lysate)

Western Blot analysis of EPB41 expression in transfected 293T cell line by EPB41 monoclonal antibody (M01), clone 3D9.

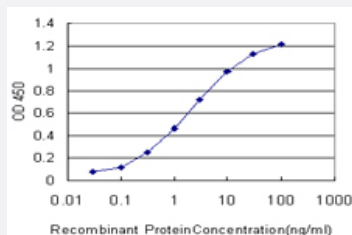
Lane 1: EPB41 transfected lysate(81 kDa).

Lane 2: Non-transfected lysate.



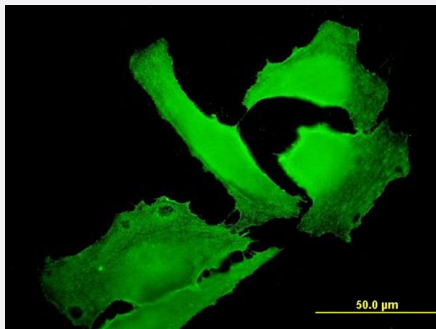
Immunohistochemistry (Formalin/PFA-fixed paraffin-embedded sections)

Immunoperoxidase of monoclonal antibody to EPB41 on formalin-fixed paraffin-embedded human colon. [antibody concentration 3 ug/ml]



Sandwich ELISA (Recombinant protein)

Detection limit for recombinant GST tagged EPB41 is approximately 0.03ng/ml as a capture antibody.



Immunofluorescence

Immunofluorescence of monoclonal antibody to EPB41 on HeLa cell . [antibody concentration 10 ug/ml]

Specification

Product Description	Mouse monoclonal antibody raised against a partial recombinant EPB41.
Immunogen	EPB41 (AAH39079, 116 a.a. ~ 225 a.a) partial recombinant protein with GST tag. MW of the GST tag alone is 26 KDa.
Sequence	IEFGTSLDEEIIKAPIAAPEPELKTDPSLDLHSLSSAETQPAQEELREDPDFEIKEGEGLEECSKIEVKEESPQSKAETELKASQKPIRKHHRNMHCKVSLDDTVYECV
Host	Mouse
Reactivity	Human
Isotype	IgG1 Kappa
Quality Control Testing	Antibody Reactive Against Recombinant Protein.
Storage Buffer	In 1x PBS, pH 7.4
Storage Instruction	Store at -20°C or lower. Aliquot to avoid repeated freezing and thawing.

Applications

● Western Blot (Transfected lysate)

Western Blot analysis of EPB41 expression in transfected 293T cell line by EPB41 monoclonal antibody (M01), clone 3D9.

Lane 1: EPB41 transfected lysate(81 KDa).

Lane 2: Non-transfected lysate.

[Protocol Download](#)

- Immunohistochemistry (Formalin/PFA-fixed paraffin-embedded sections)

Immunoperoxidase of monoclonal antibody to EPB41 on formalin-fixed paraffin-embedded human colon. [antibody concentration 3 ug/ml]

[Protocol Download](#)

- Sandwich ELISA (Recombinant protein)

Detection limit for recombinant GST tagged EPB41 is approximately 0.03ng/ml as a capture antibody.

[Protocol Download](#)

- ELISA

- Immunofluorescence

Immunofluorescence of monoclonal antibody to EPB41 on HeLa cell . [antibody concentration 10 ug/ml]

Gene Info — EPB41

Entrez GeneID [2035](#)

GeneBank Accession# [BC039079](#)

Protein Accession# [AAH39079](#)

Gene Name EPB41

Gene Alias 4.1R, EL1, HE

Gene Description erythrocyte membrane protein band 4.1 (elliptocytosis 1, RH-linked)

Omim ID [130500](#)

Gene Ontology [Hyperlink](#)

Gene Summary Elliptocytosis is a hematologic disorder characterized by elliptically shaped erythrocytes and a variable degree of hemolytic anemia. Inherited as an autosomal dominant, elliptocytosis results from mutation in any one of several genes encoding proteins of the red cell membrane skeleton. The form discussed here is the one found in the 1950s to be linked to Rh blood group and more recently shown to be caused by a defect in protein 4.1. 'Rh-unlinked' forms of elliptocytosis are caused by mutation in the alpha-spectrin gene (MIM 182860), the beta-spectrin gene (MIM 182870), or the b and 3 gene (MIM 109270).[supplied by OMIM]

Other Designations OTTHUMP00000003772|OTTHUMP00000003773|OTTHUMP00000003774|erythrocyte surface protein band 4.1

Pathway

- [Tight junction](#)