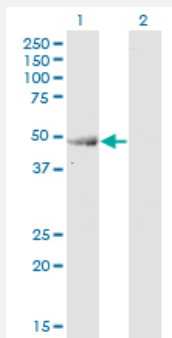


# ENO3 monoclonal antibody (M04), clone 3C6

Catalog # H00002027-M04

Size 100 ug

## Applications

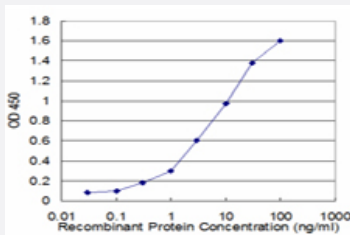


### Western Blot (Transfected lysate)

Western Blot analysis of ENO3 expression in transfected 293T cell line by ENO3 monoclonal antibody (M04), clone 3C6.

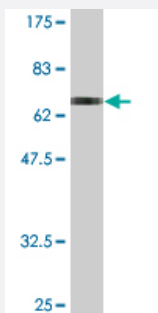
Lane 1: ENO3 transfected lysate (46.9 KDa).

Lane 2: Non-transfected lysate.



### Sandwich ELISA (Recombinant protein)

Detection limit for recombinant GST tagged ENO3 is approximately 0.3ng/ml as a capture antibody.



Western Blot detection against Immunogen (73.48 KDa) .

## Specification

### Product Description

Mouse monoclonal antibody raised against a full-length recombinant ENO3.

Immunogen	ENO3 (AAH17249, 1 a.a. ~ 434 a.a) full-length recombinant protein with GST tag. MW of the GST tag alone is 26 KDa.
Sequence	MAMQKIFAREILDSRGNPTVEVDLHTAKGRFRAAVPSGASTGIYEALERDGDKGRLGKGVLKA VENINSTLGPALLQKKLSVADQEKVDKFMIELDGTENKSKFGANAILGVSLAVCKAGAAEKGVPLY RHIADLAGNPDILPVPFNVINGGSHAGNKLAMQEFMILPVGASSFKEAMRIGAEVYHHLKGVIKA KYGKDATNVGDEGGFAPNILENNEALELLKTAIQAAGYPDKVVIGMDVAASEFYRNGKYDLDFKS PDDPARHITGEKLGELYKSFIGNYPVVSIEDPFDQDDWATWTSFLSGVNIQVGGDLTVTNPKRIAQ AVEKKACNCLLLKVNQIGSVTESIQACKLAQSNQWGMVSHRSGETEDTFIADLVVGLCTGQIKT GAPCRSERLAKYNQLMRIEALGDKAIFAGRKFRNPKAK
Host	Mouse
Reactivity	Human
Isotype	IgG2b Kappa
Quality Control Testing	Antibody Reactive Against Recombinant Protein. Western Blot detection against Immunogen (73.48 KDa) .
Storage Buffer	In 1x PBS, pH 7.4
Storage Instruction	Store at -20°C or lower. Aliquot to avoid repeated freezing and thawing.

## Applications

- Western Blot (Transfected lysate)

Western Blot analysis of ENO3 expression in transfected 293T cell line by ENO3 monoclonal antibody (M04), clone 3C6.

Lane 1: ENO3 transfected lysate(46.9 KDa).

Lane 2: Non-transfected lysate.

[Protocol Download](#)

- Western Blot (Recombinant protein)

[Protocol Download](#)

- Sandwich ELISA (Recombinant protein)

Detection limit for recombinant GST tagged ENO3 is approximately 0.3ng/ml as a capture antibody.

[Protocol Download](#)

- ELISA

## Gene Info — ENO3

Entrez GeneID [2027](#)

GeneBank Accession# [BC017249](#)

Protein Accession# [AAH17249](#)

Gene Name ENO3

Gene Alias MSE

Gene Description enolase 3 (beta, muscle)

Omim ID [131370](#)

Gene Ontology [Hyperlink](#)

**Gene Summary** This gene encodes one of the three enolase isoenzymes found in mammals. This isoenzyme, a homodimer, is found in skeletal muscle cells in the adult. A switch from alpha enolase to beta enolase occurs in muscle tissue during development in rodents. Mutations in this gene can be associated with metabolic myopathies that may result from decreased stability of the enzyme. Two transcripts have been identified for this gene that differ only in their 5' UTR. [provided by RefSeq]

**Other Designations** 2-phospho-D-glycerate hydrolyase|ENO3, muscle enolase 3 beta|OTTHUMP00000125242|beta enolase|enolase 3|enolase-3, beta, muscle|muscle specific enolase|skeletal muscle enolase

## Pathway

- [Biosynthesis of alkaloids derived from histidine and purine](#)
- [Biosynthesis of alkaloids derived from ornithine](#)
- [Biosynthesis of alkaloids derived from shikimate pathway](#)
- [Biosynthesis of alkaloids derived from terpenoid and polyketide](#)
- [Biosynthesis of phenylpropanoids](#)
- [Biosynthesis of plant hormones](#)
- [Biosynthesis of terpenoids and steroids](#)
- [Glycolysis / Gluconeogenesis](#)
- [Metabolic pathways](#)

- [RNA degradation](#)

## Disease

- [Muscular Dystrophies](#)